

Remote Desktop Using Windows XP Pro

Requirements:

1. Home & Office should have Windows XP.
2. Internet Connection: Broadband preferred.
3. IP Address of your office computer
4. Your office computer must be on.

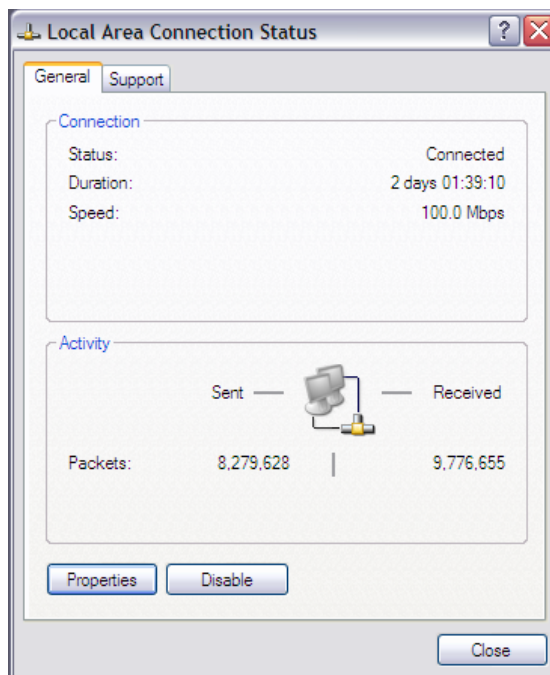
NOTE: This will NOT work in the new COM Research Building.

Finding Your Office Computer's IP Addresses

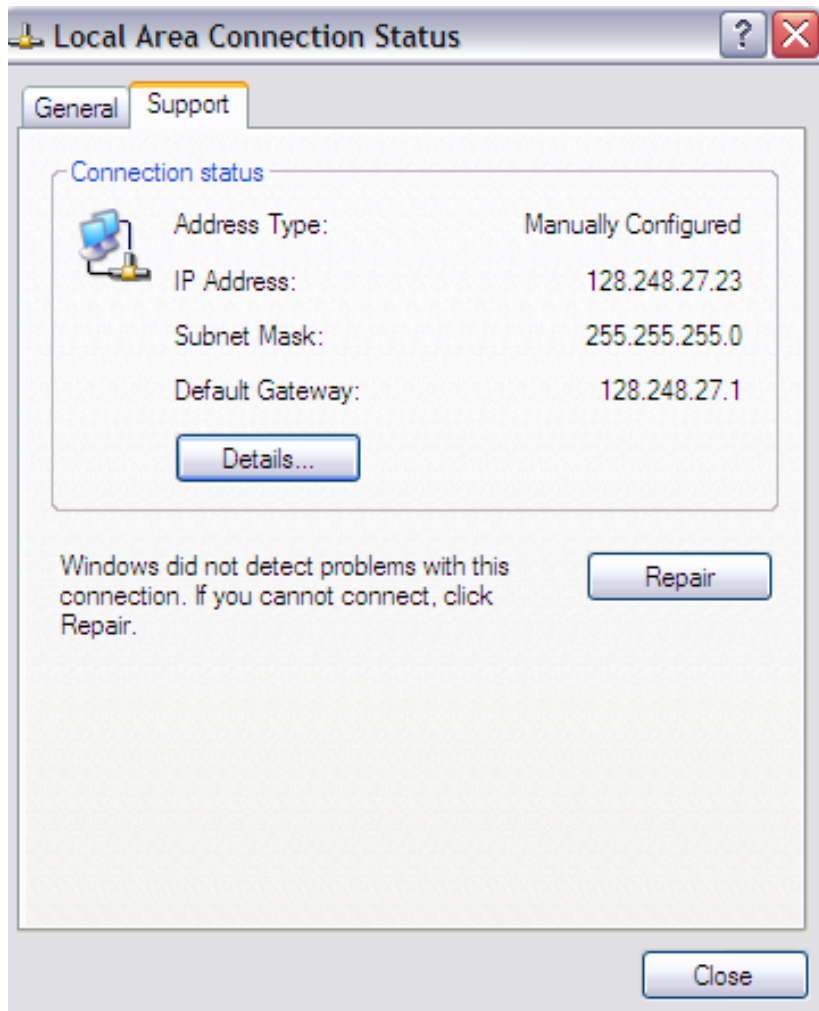
1. On the bottom right hand side of your screen, double click the icon that looks like 2 computer screens next to each.



2. This opens the Local Area Connection Status window.



3. Click on the Support Tab.



4. Write down your IP address and bring this home with you.

Office Setup

1. Right Click 'My Computer' & Select Properties
2. Select the Remote Tab
3. Make sure that both Allow Remote Assistance & Allow Remote Desktop are checked.
4. Click OK.

Home Setup

1. Go to Start> All Programs> Accessories> Communications> then Right Click Remote Desktop Connection. Select Send To> Desktop.
2. Double click the new Remote Desktop Connection icon on your desktop.
3. Enter your Office IP Address and click OK.
4. If any messages appear, read thoroughly and answer appropriately.
5. Login as you normally would.
6. When done, don't logoff. Close the window by using the 'X' on the tab that appears on the top of the screen.