

**A**mong the more enjoyable responsibilities I fulfill as Head of the Department of Ophthalmology and Visual Sciences is reporting on the activities and accomplishments of our program. Thanks to the hard work and dedication of our faculty and support personnel, and to the generosity of our alumni, friends and donors, we continue to excel in all areas of our patient care, education and research activity.

Clinically, we remain a strong Department in the College of Medicine and Medical Center. Our outpatient visits continued to be the highest in the Medical Center in FY08 and our surgical volume increased. Our physicians again have been ranked highly by their peers and in the leading healthcare surveys. In 2008, 19 of our physicians were named Best Doctors® or Top Doctors. Our reputation as leaders in the management of the most complicated ophthalmologic cases is being enriched by the addition of four new faculty. Dr. William Mieler, a renowned retina specialist and leader in ocular oncology, and Dr. Irene Maumenee, an internationally recognized authority in hereditary ocular diseases, join as senior faculty. Bringing strength to our junior faculty are Dr. Pete Setabutr, a specialist in oculoplastic and reconstructive surgery, and Dr. Amy Lin, who completed residencies in ophthalmology and pathology, and a fellowship in ocular pathology, at UIC and now shares a joint faculty appointment with us and the Department of Pathology. Our clinical space is also showing improvement. Renovation and expansion of the Retina and Uveitis Services are complete, and services at the Millennium Park Eye Center are expanding.

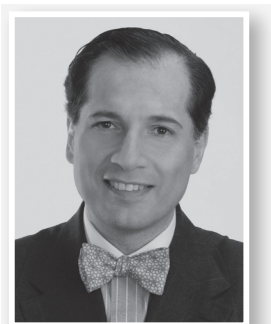
We continue to attract the most competitive ophthalmology residents as demonstrated once again by our entering resident class. Educational innovation, a hallmark of our Department, carries on with the addition of new learning modules for residents and fellows along with the expansion of our international **exchange program**, which will add a rotation at the Aravind Eye Hospital in India to our current rotation at Keio University in Japan. We are offering the **2nd Annual Illinois Eye Review**, an ophthalmology education program on March 16-22, 2009 with 76 hours of CME credit.

Advances in vision research are making headway despite decreases in funding by the National Eye Institute (NEI). Total sponsored research support, from federal agencies (including NEI), private foundations and industry, increased by almost \$1-million from FY07 to FY08, with new awards amounting to \$1.4-million. This is an exceptional record and a substantial accomplishment in the face of funding cuts. The research productivity of our faculty, as indicated by publications, continues to be one of our greatest strengths. For the period starting July 1, 2007 through October 15, 2008, our faculty published 134 peer-reviewed articles, 6 books and 66 book chapters.

The economic events of this fall have made us look for ways to tighten our belts. We continue to explore creative ways to gain efficiencies, increase productivity and cut expenses without compromising quality. One such approach will be apparent to the readers of this publication, which has been shortened to include only the most essential information on the developments over the past year. We rely upon our web site ([www.uic.edu/com/eye](http://www.uic.edu/com/eye)) to share patient stories, details about scientific discoveries, and news about our **CME programs and events**, including a review of our **150th Anniversary Celebration** last June. We encourage you to visit our site and sign up for our **monthly electronic announcements**.

We would be remiss if we did not devote space to acknowledging the generosity of those who have given so generously to our Department. We are the grateful recipient of \$1,075,867 in gifts and \$213,500 in pledges and commitments from loyal alumni, grateful patients and generous individuals for the period starting July 1, 2006 and ending September 30, 2008. In these challenging economic times, the demands on our Department will increase while the resources to meet them will lessen. Your support of our patient care, education, and vision research programs will help us bring relief and offer hope to everyone who has suffered vision loss.

**Dimitri T. Azar, MD**  
B.A. Field Endowed Chair of Ophthalmologic Research  
Professor and Head  
Chief of Refractive Surgery



## Best Doctors in America® for 2008\*

**Amjad Ahmad**, *Oculoplastics*  
**Dimitri Azar**, *Cornea*  
**Nathalie Azar**, *Pediatric Ophthalmology & Adult Strabismus*  
**Ali Djalilian**, *Cornea*  
**Robert Egel**, *Pediatric Ophthalmology & Adult Strabismus*  
**Gerald Fishman**, *Inherited Retinal Diseases*  
**Debra Goldstein**, *Uveitis*  
**James Goodwin**, *Neuro-Ophthalmology*  
**David Hillman**, *Glaucoma*  
**Sandeep Jain**, *Cornea*  
**Lawrence Kaufman**, *Pediatric Ophthalmology & Adult Strabismus*  
**Jennifer Lim**, *Retina*  
**Irene Maumenee**, *Pediatric Ophthalmology & Adult Strabismus*  
**William Mieler**, *Retina*  
**Joel Sugar**, *Cornea*  
**Howard Tessler**, *Uveitis*  
**Elmer Tu**, *Cornea*  
**Jacob Wilensky**, *Glaucoma*

## Top Doctors 2008\*\*

**Dimitri Azar**, *Cornea*  
**Gerald Fishman**, *Inherited Retinal Diseases*  
**James Goodwin**, *Neuro-Ophthalmology*  
**Irene Maumenee**, *Pediatric Ophthalmology & Adult Strabismus*  
**William Mieler**, *Retina*  
**Allen Putterman**, *Oculoplastics*  
**Joel Sugar**, *Cornea*  
**Jacob Wilensky**, *Glaucoma*

\*Published October 2008

\*\*Published January 2008, Castle Connelly Medical