

# 2ND ANNUAL RETINA Symposium

Management of Difficult & Complicated Cases in Retina:  
**ADVANCEMENTS IN THE MANAGEMENT OF COMMON RETINAL DISEASES**

## COURSE DIRECTOR

Jennifer I. Lim MD, Professor and Director, Retina Service, University of Illinois at Chicago

## PURPOSE

The purpose of this course is to inform ophthalmologists about the latest clinical advancements and research developments as they relate to improved management of common retinal vascular and macular diseases.

## INTENDED AUDIENCE

This course has been organized for retina specialists, general ophthalmologists, retina fellows and ophthalmology residents encompassing all levels of experience and knowledge.

## OBJECTIVES

By the end of this continuing medical education activity, participations should be able to:

- Describe the pathophysiology of age-related macular degeneration (AMD) and diabetic macular edema.
- Discuss experimental studies being conducted for prevention of progression of non-neovascular AMD.
- Summarize current clinical trial results for management of neovascular AMD.
- Describe benefits and risks of various treatment options for diabetic macular edema.
- Discuss the white dot syndromes.
- Review new developments in the treatment of macular edema, retinal vein occlusions and retinal degeneration.
- Be able to interpret and discuss the implications of OCT imaging for common retinal diseases.

## MEDICAL EDUCATION GRANTS

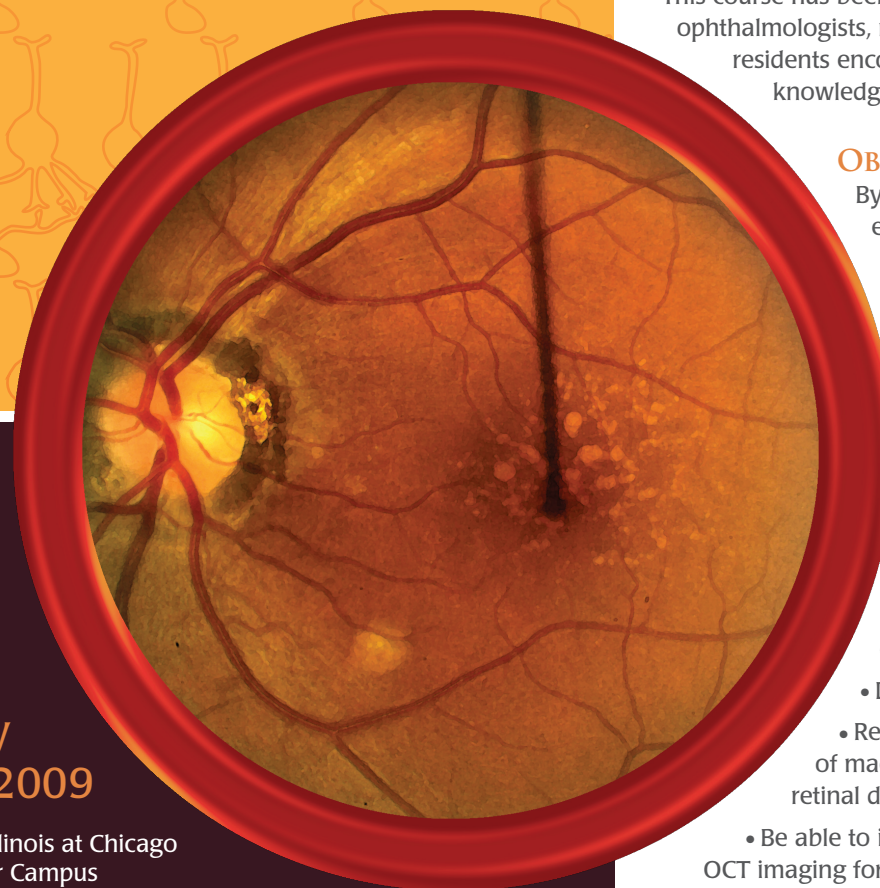
We gratefully acknowledge medical education funding from Genentech and Alcon in support of this program.

 **University of Illinois**  
EYE and EAR INFIRMARY  
Ophthalmology & Visual Sciences

Among the Top 20 Eye Departments in the US  
and a leader in Ophthalmology and Visual Sciences for 150 Years

# 2ND ANNUAL RETINA Symposium

Management of Difficult & Complicated Cases in Retina:  
Current Management and Emerging Treatments  
for Retinal Vascular and Macular Diseases



**Saturday  
April 4, 2009**

University of Illinois at Chicago  
Medical Center Campus

Moss Auditorium  
College of Medicine Research Building  
909 S. Wolcott Avenue  
Chicago, IL 60612

Earn up to 5 AMA PRA Category 1 CME credits™

**UIC** Department of Ophthalmology  
and Visual Sciences  
UNIVERSITY OF ILLINOIS  
AT CHICAGO  
COLLEGE OF MEDICINE

1855 West Taylor Street  
Chicago, IL 60612

## UPCOMING SYMPOSIA

MARCH 16-22  
2nd Annual Illinois Eye Review

APRIL 4  
2nd Annual Retina Symposium

MAY 13  
Annual Glaucoma Meeting

JUNE 19-20  
33rd Annual Alumni Meeting

SEPTEMBER TBA  
2nd Biennial Neuro-Ophthalmology  
Symposium

Non-Profit Org.  
US Postage  
**PAID**  
Chicago, Illinois  
Permit No. 4860

2ND ANNUAL **RETINA** Symposium

## COURSE DIRECTOR

**JENNIFER I. LIM MD**

Professor and Director, Retina Service  
University of Illinois at Chicago  
Illinois Eye and Ear Infirmary

## GUEST FACULTY

**ALAN C. BIRD, MD**

Emeritus Professor, London University  
Honorary Consultant, Moorfields Eye Hospital

**AMANI A. FAWZI, MD**

Assistant Professor of Ophthalmology  
Doheny Eye Institute; University of Southern California

**LEE JAMPOL, MD**

Louis Feinberg Professor and Chair  
Northwestern University Feinberg School of Medicine  
Chief of Ophthalmology

**KIRK PACKO, MD**

Professor and Chairman  
Rush Medical College

**CYNTHIA TOTH, MD**

Professor of Ophthalmology, Vitreoretinal Diseases and Surgery  
Professor of Biomedical Engineering  
Duke University Eye Center

## ILLINOIS EYE AND EAR INFIRMARY FACULTY

**MICHAEL R. BLAIR, MD**

Assistant Professor of Ophthalmology

**NORMAN P. BLAIR, MD**

Professor of Ophthalmology

**GERALD FISHMAN, MD**

Marion Schenk, Esq., Chair of Ophthalmology  
Director, Inherited Retinal Disease Service

**JENNIFER I. LIM MD**

Professor of Ophthalmology  
Director, Retina Service

**WILLIAM F. MIELER MD**

Professor of Ophthalmology  
Director, Ocular Oncology Section, Retina Service

**LAWRENCE J. ULANSKI, MD**

Assistant Professor of Ophthalmology

## SATURDAY, APRIL 4, 2009

8:00 – 8:15 am	Registration & Breakfast
8:15 – 8:20 am	<b>Dr. Jennifer Lim:</b> Welcoming remarks
<b>DIABETES</b>	
8:20 – 8:40 am	<b>Kirk Packo:</b> Pathophysiology/New Insights into Diabetic Retinopathy
8:40 – 9:00 am	<b>William F. Mieler:</b> Diabetic Macular Edema
9:00 – 9:20 am	<b>William F. Mieler:</b> Surgical Retina
<b>AMD</b>	
9:20 – 10:00 am	<b>Alan Bird</b> ( <i>Gerhard Cless Named Lecturer</i> ): Pathophysiology of AMD
10:00 – 10:30 am	<b>BREAK</b>
10:30 – 10:55 am	<b>Jennifer I. Lim:</b> Exudative AMD
10:55 – 11:20 am	<b>Jennifer I. Lim:</b> Non-exudative and Geographic Atrophy
<b>OCCLUSIVE RETINAL DISEASES</b>	
11:20 – 11:40 am	<b>Norman Blair:</b> Arterial Occlusions
11:40 – 12:00 nn	<b>Lawrence Ulanski:</b> Macular Edema: Current Management
12:00 – 12:20 pm	<b>Michael Blair:</b> Anti-VEGF Treatment for Retinal Occlusions
12:20 – 1:30 pm	<b>LUNCH</b>
<b>NEW TECHNOLOGICAL BREAKTHROUGHS</b>	
1:30 – 1:50 pm	<b>Cynthia Toth:</b> OCT Imaging of Retinal Diseases
1:50 – 2:10 pm	<b>Amani Fawzi:</b> Drug Delivery for Retinal Vascular Diseases
<b>WHITE DOT SYNDROME</b>	
2:10 – 2:30 pm	<b>Lee Jampol:</b> White Dot Spots Syndrome
<b>RETINAL DEGENERATION/ERG</b>	
2:30 – 3:00 pm	<b>Gerald Fishman:</b> Retinal Degeneration/ERG

## GERHARD CLESS ENDOWED LECTURE



**ALAN C. BIRD, MD** will deliver the Gerhard Cless Endowed Lecture at the 2nd Annual Retina Symposium.

Dr. Bird is a leading expert on the treatment of retinal vascular disease and genetic and degenerative retinal disorders. He has published numerous papers, and his research has contributed to important breakthroughs in the understanding of retinal diseases such as retinal dystrophies and age-related macular disease. He earned his medical degree from Guy's Hospital Medical School in 1961 and came to the United States in 1968 under a fellowship at the Bascom Palmer Eye Institute. Upon his return to London in 1969, he was appointed to the Institute of Ophthalmology as Lecturer, and subsequently Senior Lecturer, Reader and Professor, and Consultant at Moorfields Eye Hospital, where he established a specialized clinical service for retinal disease.

The Gerhard Cless Endowed Lecture is made possible by a generous gift from the Cless Family Foundation and supports the dissemination of important research on retinal diseases and disorders.



**EARLY REGISTRATION FEE: \$75**  
REGISTRATION MUST BE RECEIVED BY MARCH 27, 2009.

**WALK-IN REGISTRATION FEE: \$100**  
AVAILABLE AS SPACE PERMITS.

## PAYMENT METHODS:

Credit card (for online payment) or check made payable to:  
UIC Department of Ophthalmology

## REGISTER online at:

<http://www.uic.edu/com/eye/Education/RetinaSymp09.shtml>

## If you cannot register online, contact:

Anna Liza Castro-Malek  
UIC Department of Ophthalmology and Visual Sciences  
Illinois Eye and Ear Infirmary  
Phone: (312) 355-3841 or Email: [alcmalek@uic.edu](mailto:alcmalek@uic.edu)

**FACULTY DISCLOSURE** The University of Illinois, in an effort to comply with the Standards and Policies set forth by the Accreditation Council for Continuing Medical Education (ACCME) requires that all faculty members demonstrate balance, independence, objectivity, and scientific rigor in their presentations. All faculty members will disclose significant financial interests or relationships with organizations that provide products, services, or equipment being discussed during a presentation. Faculty members are also required to inform the audience of any presentation of a medical device, product, or pharmaceutical that has not been approved for such purpose by the FDA. Financial and "off-label" disclosure statements by the faculty will be made at the outset of each presentation so participants may form their own opinion about each presentation.

## CME CREDIT AND ACCREDITATION

**UIC** The University of Illinois at Chicago College of Medicine is accredited by the Accreditation Council for Continuing Medical Education to provide continuing medical education for physicians.

The University of Illinois at Chicago (UIC) College of Medicine designates this educational activity for a maximum of 5 *AMA PRA Category 1 Credits™*. Physicians should only claim credit commensurate with the extent of their participation in the activity.

Earn up to 5 *AMA PRA Category 1 CME credits™*