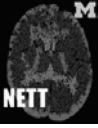



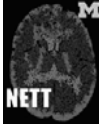
Neurological Emergency Treatment Trials Network



Six questions about the new network

*Robert Silbergleit, MD
University of Michigan*

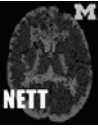
What is NETT?



Neurological Emergencies Treatment Trials
A new clinical trials network dedicated to:

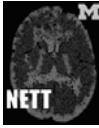
- Cross-disciplinary cooperation
- Interventions in minutes not hours
- Large simple trial streamlined trial designs

How will NETT work?



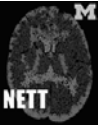
- Hub and Spoke Design
 - Large
 - Scalable
- Public Utility Model
 - Open
 - Economical

What diseases will be studied?



- Neurotrauma: Brain & Spinal Cord Injury
- Stroke: Ischemic & Hemorrhagic
- Status Epilepticus
- CNS Infections: Meningitis & Encephalitis
- Anoxic Brain Injury
- Others: Bell's Palsy, Headache, etc.

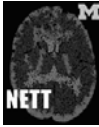
What kinds of questions?



Does very early intensive blood pressure lowering prevent hematoma expansion and improve outcome in patients with ICH?

The INTERACT trial

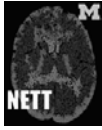
What kinds of questions?



Does a lower dose of thrombolytic plus a glycoprotein inhibitor improve efficacy and reduce bleeding complications compared to standard dose thrombolysis?

The CLEAR trial

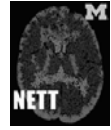
What kinds of questions?



Can progesterone infusion improve survival and neurological outcome in patients with traumatic brain injury?

The ProTECT trial

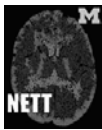
What kinds of questions?



Can IM midazolam stop seizures as effectively as IV lorazepam in the prehospital care of status epilepticus?

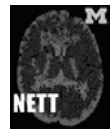
The RAMPART trial

What kinds of questions?



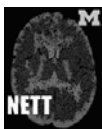
Whatever question you want to ask...

What's the impact?



- Opportunity to advance care of patients with neuro-emergencies
- Large NIH investment in emergency medicine clinical research
- Re-engineering the clinical research enterprise

How will you be involved?



- As a Practitioner
- As a Hub co-investigator
- As a Trial investigator

