
**Current Updates on
Ischemic Stroke, ICH,
and SAH**



Edward P. Sloan, MD, MPH, FACEP 

**European Society for
Emergency Medicine**

Edward P. Sloan, MD, MPH, FACEP 



**4th EuSEM Congress
Crete, Greece
October 5-7, 2006**



Edward P. Sloan, MD, MPH, FACEP 

Edward P. Sloan, MD, MPH

Professor

**Department of Emergency Medicine
University of Illinois College of Medicine
Chicago, IL**

Edward P. Sloan, MD, MPH, FACEP 



***Thank you to
AstraZeneca Neuroscience
for their support of these
educational programs***

Edward P. Sloan, MD, MPH, FACEP 



Overview
Mission Statement

- **Patients with neurological emergencies deserve quality emergency care.**
- **Quality scientific research.**
- **Case-oriented, evidence-based medical education on optimal acute neurological care.**
- **Use of technology to break down space and time barriers.**
- **Advocacy.**

Edward P. Sloan, MD, MPH, FACEP

Education
Educational Activities to Date

- 60 Meetings
- 180 Speakers
- 380 Lectures
- 350+ Lectures posted on the FERNE website
- 13 Lectures posted on the EMedHome website
- 97% Evaluations good or excellent
- 4800+ EM professionals
- 7500+ contact hours over 9 years

Edward P. Sloan, MD, MPH, FACEP

Education
Branded Product: Case-based Learning

- Case presentation
- Key Clinical Questions
- Introduction, the clinical disease state
- Optimal ED management strategies
- Patient outcome
- References, Annotated bibliography
- Key Learning Points
- Questions and answers

Edward P. Sloan, MD, MPH, FACEP

Education
Web-based Learning: Video Slideshows

- Audio, video and slide content
- Able to access individual slides for specific content
- MS Producer, viewable with Windows Media Player

Edward P. Sloan, MD, MPH, FACEP


Education
Web-based Learning: Slide Lectures

Download or view online


Edward P. Sloan, MD, MPH, FACEP

Education
Web-based Learning: Webcasting

- Live simulcasts using Centra Symposium



Edward P. Sloan, MD, MPH, FACEP



Education
Handheld Software: HandiStroke Rx

HANDi Stroke Rx Available free from www.ferne.org

- Written at Mount Sinai, New York
- Funded by a FERNE grant
- NIH Stroke Scale
- tPA Inclusion/Exclusion criteria
- tPA dosage calculator
- Continuation of care orders



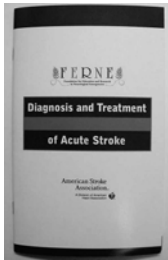
Edward P. Sloan, MD, MPH, FACEP




Education
Educational Materials

Acute Stroke Materials

- Developed a handbook and companion CD Rom
- Published Spring 2004
- Collaboration included American Stroke Association and France Foundation




Edward P. Sloan, MD, MPH, FACEP




Education
Web-based Learning: EMedHome.com

- FERNE generated content
- CME can be obtained via the EMedHome website
- Slides and audio



Edward P. Sloan, MD, MPH, FACEP



Education
Web-based Learning: Abstract Search

Topic specific abstract searches




Edward P. Sloan, MD, MPH, FACEP



Research
Directed Neurological Emergencies Research Grant

- \$ 25-50,000 per grant
- Emergency Medicine Foundation (EMF)
- Promotes new knowledge relating to the diagnosis and acute management of neurological emergencies
- Directed to Emergency Medicine researchers

Edward P. Sloan, MD, MPH, FACEP



Research

Seed Grants / Unsolicited Proposals

- Up to \$5,000 grants
- Promote new research
- Help secure future funding
- Identify the support source
- Specific area of interest
- Available for all EM practitioners

Edward P. Sloan, MD, MPH, FACEP 

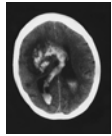


Foundation for Education and Research
in Neurological Emergencies

www.ferne.org

Edward P. Sloan, MD, MPH, FACEP 

Update on the Care of Emergency Department Transient Ischemic Attack Patients



Edward P. Sloan, MD, MPH, FACEP 

ED Transient Ischemic Attack Patient Management: *Can At-risk Ischemic Stroke Patients Be Identified?*

Edward P. Sloan, MD, MPH, FACEP 

Conclusions

- Future imaged based TIA definition?
- Isolated visual or sensory symptoms suggest low short term risk for stroke
- Pace and setting of work up dependent on perceived short term risk
- Prediction rules require prospective validation

Edward P. Sloan, MD, MPH, FACEP 

ED Transient Ischemic Attack Patient Management: *What Role for Outpatient Evaluation and Disposition?*

Edward P. Sloan, MD, MPH, FACEP 

Conclusions

- Yes. An outpatient evaluation of ED TIA patients can occur successfully.
- ED evaluation to include H & P, labs, EKG, CT Head (non-contrast), carotid doppler (CTA) evaluation
- Must be able to detect clinically treatable causes of TIA and CVA (carotid occlusion, cardioembolic sources)
- Important work given reimbursement trends (prevent admits)

Edward P. Sloan, MD, MPH, FACEP 

ED Ischemic Stroke Patient Management: *Optimal Diagnostic and Treatment Strategies*



Edward P. Sloan, MD, MPH, FACEP 

Stroke Care within the 3 Hour IV tPA Window: *Why IV tPA, or What Alternatives?*



Edward P. Sloan, MD, MPH, FACEP 

E. Bradshaw Bunney, MD, FACEP

*Associate Professor
Emergency Medicine Residency Director*

Department of Emergency Medicine
University of Illinois College of Medicine
at Chicago

Edward P. Sloan, MD, MPH, FACEP 

Key Clinical Questions

- What is the optimal use of tPA given its reported efficacy and clinical effectiveness?
- If stroke patients present within 3 hours, should other therapies besides IV tPA be considered?

Edward P. Sloan, MD, MPH, FACEP 

Conclusions

- IV tPA can and should be used based on the NINDS trial, phase IV data, meta-analysis data, and the NINDS reanalysis
- IV tPA should not be delayed in eligible patients within 3 hours for other potentially useful therapies

Edward P. Sloan, MD, MPH, FACEP 

Stroke Care After the 3 Hour IV tPA Window: *What are the Diagnostic and Therapeutic Options?*



Edward P. Sloan, MD, MPH, FACEP 

Andrew Asimos, MD, FACEP

*Adjunct Associate Professor
Stroke Team Director*

Department of Emergency Medicine
University of North Carolina School of
Medicine at Chapel Hill

Edward P. Sloan, MD, MPH, FACEP 

Key Clinical Questions

- What are the optimal neuroimaging modalities in non-IV tPA patients?
- What pharmacologic, interventional radiology, and operative techniques should be considered after (or during) the three hour IV tPA window?

Edward P. Sloan, MD, MPH, FACEP 

Conclusions

- It is often possible to identify the occluding stroke lesion and the amount of salvagable ischemic penumbra using CT angiography
- There are multiple options, including IA thrombolysis, mechanical clot retrieval, and stenting of obstructing lesions

Edward P. Sloan, MD, MPH, FACEP 

Stroke Patient Care in the Prehospital and ED Settings: *Should EMS Triage & Inter-hospital Transfer Occur?*



Edward P. Sloan, MD, MPH, FACEP 

Edward P. Sloan, MD, MPH

*Professor
FERNE President & Board Chair*

Department of Emergency Medicine
University of Illinois College of Medicine

Edward P. Sloan, MD, MPH, FACEP 

Key Clinical Questions

- Should pre-hospital stroke patients be directly triaged by EMS to specialty stroke centers?
- When should the ED inter-hospital transfer of stroke patients to specialty stroke centers occur?

Edward P. Sloan, MD, MPH, FACEP 

Conclusions

- At this time, the data does not support direct triage of stroke patients to specialized centers
- It is optimal to first enhance the stroke patient care in all acute care hospitals
- Inter-hospital transfer should take place if a “higher level of care” is needed or a “higher level of cure” is found

Edward P. Sloan, MD, MPH, FACEP 

Current Updates on Ischemic Stroke, SAH, & ICH



Edward P. Sloan, MD, MPH, FACEP 

Stroke Patient and New Stroke Therapy Assessment: *ED NIHSS & Stroke Scales Use*



Edward P. Sloan, MD, MPH, FACEP 

Andrew Asimos, MD, FACEP

*Adjunct Associate Professor
Stroke Team Director*

Department of Emergency Medicine
University of North Carolina School of
Medicine at Chapel Hill

Edward P. Sloan, MD, MPH, FACEP 

Key Clinical Questions

- What is the role of the NIHSS in the ED evaluation and Rx of stroke pts?
- How can other stroke scales be simply utilized in order to assess the efficacy of stroke therapies?

Edward P. Sloan, MD, MPH, FACEP 

**Emergency Department
Neuroprotection:
*What are Optimal Strategies
in Ischemic Stroke Patients?***



Edward P. Sloan, MD, MPH, FACEP 

Andrew Asimos, MD, FACEP

*Adjunct Associate Professor
Stroke Team Director*

Department of Emergency Medicine
University of North Carolina School of
Medicine at Chapel Hill

Edward P. Sloan, MD, MPH, FACEP 

Key Clinical Questions

- What neuroprotection strategies prevent secondary brain injury following stroke?
- What is the information from the SAINT-I (and SAINT-II) clinical trials regarding the potential use of neuroprotectants such as NXY-059?

Edward P. Sloan, MD, MPH, FACEP 

**The Diagnosis of SAH in ED
Headache Patients:
*What Roles for CT
Neuroimaging & Lumbar
Puncture?***



Edward P. Sloan, MD, MPH, FACEP 

E. Bradshaw Bunney, MD, FACEP

*Associate Professor
Emergency Medicine Residency Director*

Department of Emergency Medicine
University of Illinois College of Medicine
at Chicago

Edward P. Sloan, MD, MPH, FACEP 

Key Clinical Questions

- What are optimal headache patient diagnostic and treatment strategies based on current guidelines ?
- What is the role of LP (and CTA) in low risk headache patients whose CT is negative for blood?

Edward P. Sloan, MD, MPH, FACEP 

ED Hemorrhagic Stroke Patient Management: *What Role for Operative Intervention and Factor VIIa?*



Edward P. Sloan, MD, MPH, FACEP 

Edward P. Sloan, MD, MPH

*Professor
FERNE President & Board Chair*

Department of Emergency Medicine
University of Illinois College of Medicine

Edward P. Sloan, MD, MPH, FACEP 

Key Clinical Questions

- What is the role of operative intervention in ICH patients given the results of the STICH trial?
- What is the optimal management of anti-coagulated ICH patients and the potential role of factor VIIa?

Edward P. Sloan, MD, MPH, FACEP 

Housekeeping

- Content via website
- CME via the congress (US conversion in US)
- Evaluations...Please provide us feedback!
- Survey: help us to help you!
- Want more information?
 - www.ferne.org website
 - ferne@ferne.org

Edward P. Sloan, MD, MPH, FACEP 



*Thank you to
AstraZeneca Neuroscience
for their support of these
educational programs*

Edward P. Sloan, MD, MPH, FACEP 

FERNE & Industry Support

- Collaboration in providing quality education programs
- Disease state education critical
- Independent grant process in US
- Unrestricted educational grants
- Content development independent of grant source

Edward P. Sloan, MD, MPH, FACEP 

Thank You

- **Drs. Askitopoulou and Williams**
- **EuSEM**
- **Carla, Charri, Jon, Li, & FERNE staff**
- **The ERA staff**
- **All of the FERNE supporters**
- **AstraZeneca International and their staff**
- **All of you**

Edward P. Sloan, MD, MPH, FACEP 

Thank you.

www.ferne.org
ferne@ferne.org

edsloan@uic.edu

ferne_eusem_2006_strokeupdate_intro_100606_finalcd
11/7/2006 8:22 PM

Edward P. Sloan, MD, MPH, FACEP 