

GCI *Monthly*

A Publication of the Great Cities Institute at the University of Illinois at Chicago



Great Cities Institute / 412 S. Peoria Street, Suite 400 / Chicago, IL 60607 / 312.996.8700

February 2010 Issue

In This Issue

Faculty Scholar Spotlight

Rachel Weber Welcome

Upcoming Seminars

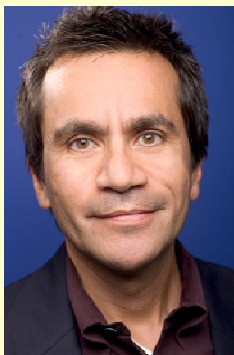
Community Engagement

Publications

Media Attention

GCI Faculty Scholar Spotlight

Jesus Ramirez-Valles



**Gayby Boomers: The
Health and Social
Connections of the
Gayest Generation**

Dear Friends of GCI:

The spring semester is well under way and we are actively engaged in a host of activities we hope you will enjoy. First we hope you can join us for a variety of new events, including Faculty Scholar presentations, a new GCI series on Comparative Urbanisms and an important new workshop on Media, Scholars, and Cities called "Covering the City."



You may also notice that we have slightly modified the structure of our monthly newsletter to highlight community engagement, publications, media attention, and podcasts. Please check our website often--additional news and resources are added all the time: <http://uic.edu/cuppa/gci/index.shtml>.

It's still pretty cold in Chicago, but it's warm inside the Institute and the coffee is good and hot. Come on by to visit us soon.

Sincerely,



David Perry
Professor and Director, Great Cities Institute

*In collaboration with Howard
Brown
Health Center*

Lecture Date & Time
*Tuesday, March 16, 2010
2:00pm
The Great Cities Institute*

Lecture Summary

The older gay/bisexual male population is rapidly increasing, largely due to the aging of the "Gayby Boomer" generation. This group of gay/bisexual men is different from their heterosexual "Baby Boomers" peers and the larger gay/bisexual male population; this was the first group of men to adopt and use the identity of gay or bisexual men to fight against societal stigma. This group was actively involved in the larger sexual liberation movement. Many in this group were able to openly live with their partners or significant others and create large communities. Then, in the 1980s they faced AIDS. In the midst of mounting number of deaths and infections, this generation mobilized, again, to fight the epidemic. Now older gay/bisexual men are the first ones to age with HIV.

The Gayby Boomer generation faces two new challenges as it enters older age: health and social connectedness. Our presentation focuses on these two aspects and their relationship. We will present findings of our ongoing studies on the health and social connectedness of older gay/bisexual men, particularly in Chicago. We will discuss gaps and opportunities in health services and research.

Welcoming Remarks from Associate Director, Research and Program Development

I am thrilled to be back at the Great Cities Institute, although it feels as if I've never been that far from it physically or philosophically. The university's commitment to engaged, urban research is what originally drew me to UIC in 1998. As a GCI Faculty Scholar back in 2001, I was able to see first-hand how that commitment translated into both high-quality scholarship and tangible community benefits. As a faculty member in Urban Planning and Policy for the last twelve years, I have had the opportunity to develop friendships and working partnerships with my CUPPA Hall neighbors: the Institute's wonderful staff, scholars, and fellows.



As the new Associate Director for Research and Program Development, I look forward to working with GCI, the UIC community, and practitioners and researchers in Chicago and other great cities around the world. I will be focused on programming - particularly coordinating speakers and other urban-themed events that benefit the university and its partners - as well as spearheading research collaborations that build off our existing capacities and developing new ones. Over the next few months, however, my main goal is to listen and to learn from the Institute's staff and partners.

Similar to the scope of GCI activities, my own research interests are wide ranging and inter-disciplinary. Because I am a strong advocate for research that is useful and actionable, I have consistently worked with community and advocacy organizations, think tanks, local governments, and the private sector throughout my career. Operating across the line that traditionally divides scholarship from practice has helped me develop the translational or "bridging" skills to improve my teaching in both our professionally-oriented master's program and our academic PhD program while also strengthening the university's contributions to the world outside its doors. I look forward to putting these skills to work in the different areas where the Institute has made and will make its mark.

Best regards,

Rachel Weber

Bio-Sketch

GCI Faculty Scholar and professor Jesus Ramirez-Valles is a scholar, filmmaker, and an advocate of Latino and GLBT health. He just completed a documentary, *Tal Como Somos, Just As We Are*, on the lives of Latino gay men, transgender persons, and people living with HIV/AIDS. He is working on a book manuscript titled, *"Compañeros: Activism, Race, and Sexuality in the Times of AIDS."* Dr. Ramirez-Valles has received awards from the National Institute of Health and the Rockefeller Foundation. For more than fifteen years he has worked on health promotion in both the United States and Latin America. He was born in Mexico, obtained his doctoral degree from the University of Michigan, and is a professor of public health at the University of Illinois-Chicago.

PODCASTS



Tied Up in Tehran

If you missed GCI faculty Scholar and Associate Professor Norma Claire Moruzzi's presentation on her book project *Tied Up in Tehran* you are in luck! Check out the GCI website for a [Podcast](#)

Upcoming Seminars

"The Significance of Extra-Researcher Roles and Commitment in Engaged Scholarship"

Presented by:

James J. Stukel Professor Michele Kelley

With Respondent:

Professor Jose Lopez

Wednesday, March 17, 2010

1-2:30pm

Great Cities Institute



The concept of researcher roles outside of activities directly related to study objectives is underdeveloped, yet ostensibly important in collaborative research with community partners. Likewise, the meaning of researcher commitment to community goals in addition to achieving research objectives is also less understood. Professors Kelley and Lopez will review how these two

dimensions of researcher- community relationships are discussed in the literature and offer examples from their own work that can inform how relational dynamics in Community-Based Participatory Research potentially influence research processes and outcomes. Implications for redefining collaborative research outcomes to include community capacity and development as well as for preparing a new generation of engaged scholars will be discussed.



Michele Kelley is a social worker by training with a research degree in public health. Her research and teaching interests include youth as active agents in community health improvement, collaborative and action inquiry with youth and communities, community collective efficacy for health, and youth social connectedness as a protective factor.



José López is an expert in Latin American history and culture and teaches at UIC and at area universities and colleges. For over 30 years, he has directed the Puerto Rican Cultural Center (PRCC) and contributed to the development and well-being of the Puerto Rican community in Humboldt Park, the Chicago metro area and beyond. He co-founded the nationally acclaimed Dr. Pedro Albizu Campos High School. More recently, he is Co-Principal Investigator of a grant from the National Institutes of Health, whereby cultural assets and community building are combined with other public health strategies to prevent and control diabetes.

of her highly anticipated lecture.

Tied Up in Tehran explores one of the key paradoxes of contemporary Iran: women's fragmented experiences of shaping a modern, urban identity in a post-revolutionary state that has explicitly Islamicized public institutions, space, and rhetoric, while also providing the conditions to enable women to emerge from the traditional private realm and engage actively as social and political agents.



Professional Education's
Certificate in Nonprofit
Management Program

[NOW ON FACEBOOK](#)



Introducing New Speaker Series:

Comparative Urbanisms



Over the next few months, GCI will be rolling out a speaker series intended to expand our understanding of urban issues domestically and internationally, paying particular attention to those that connect and differentiate contemporary cities. The increasing degree of interdependence, competition, mobility, and knowledge transfer between cities requires that any notion of the urban be conceptualized in explicitly comparative terms. Such an approach builds knowledge about urban phenomena applicable beyond single cases and challenges our assumptions of normative behavior. Invited speakers are renowned scholars who will cover a diverse range of topics from the reuse of vacant, "disfigured" land to policing the city to the role of finance in urban economies.

The first event in this series will be Winifred Curran presenting "Policing in drag: Giuliani goes global with the illusion of control" on March 11. Please see our website <http://uic.edu/cuppa/gci> for more information.

Community Engagement

GCI Fellow Elected to International Adversary Council

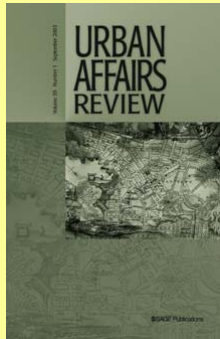


Tingwei Zhang, Director of the Asia and China Research Program, was elected as President of the International Adversary Council to the Wuhan, China Municipal Government. Wuhan is the largest city in Central China, with a population of 9.7 million. The Council provides economic and urban development advice to city leaders. The 25 member Council also includes Michael Barbalas (President, The American Chamber of Commerce, PRC) and Elaine Chao (Former U.S. Labor Secretary).

Lecture Presented by James J. Stukel Professor



James J. Stukel Professor Michele Kelley presented her engaged scholarship and teaching within the Greater Humboldt Park community to MSW students in the Jane Adams College of Social Work's Community Health and Urban Development Track.



Quick Links...

[Our Website](#)

[About Us](#)

[What We Do](#)

[Giving To GCI](#)

[Calendar of Events](#)

[Join Our Mailing List!](#)

Publications

The Fiscal State of American Cities

GCI Fellow Michael Pagano, Dean of the College of Urban Planning and Public Affairs, has recently published two articles regarding the fiscal state of American cities. "[City Fiscal Conditions in 2009](#)" and "[The Fiscal Revolution in America's Cities](#)" discuss the impact that the national economic recession has had on the budgets of municipal governments and what the future may hold for their economic rebound.



Forthcoming Articles



Rachel Weber, GCI Associate Director, for Research and Program Development, and Associate Professor of Urban Planning, has forthcoming publications in [Economic Geography](#) and [Public Finance Review](#). "Selling City Futures: The Financialization of Urban Redevelopment Policy" will appear in [Economic Geography](#) and "Ask and Ye Shall Receive? Predicting the Successful Appeal of Property Tax Assessments" (with Daniel McMillen) in [Public Finance Review](#); both will be linked on the Great Cities website as soon as possible.

Media Attention

Rachel Weber, GCI Associate Director of Research and Program Development and Associate Professor of Urban Planning, was recently featured by two media outlets.



- On January 28, 2010 she was quoted in Medill Reports on a new website where the city has posted annual reports dating from only 2004 for its tax increment financing districts, although the TIF program began in 1984. Click [here](#) for the posted article.
- On December 16, 2009 she was interviewed by Chicago Public Radio on the growing demand from nonprofit developers for tax increment financing since previous uses of TIF are becoming more transparent. Click [here](#) for the posted newscast.

GCI Fellow Michael Pagano, Dean of the College of Urban Planning and Public Affairs, was recently quoted on increasingly uncertain municipal fiscal responses to economic recession by [The Economist](#), [Dallas Morning-News](#), [Baton Rouge Advocate](#), and [Harrisburg Patriot-News](#). Click on any of the media outlets for further information.

