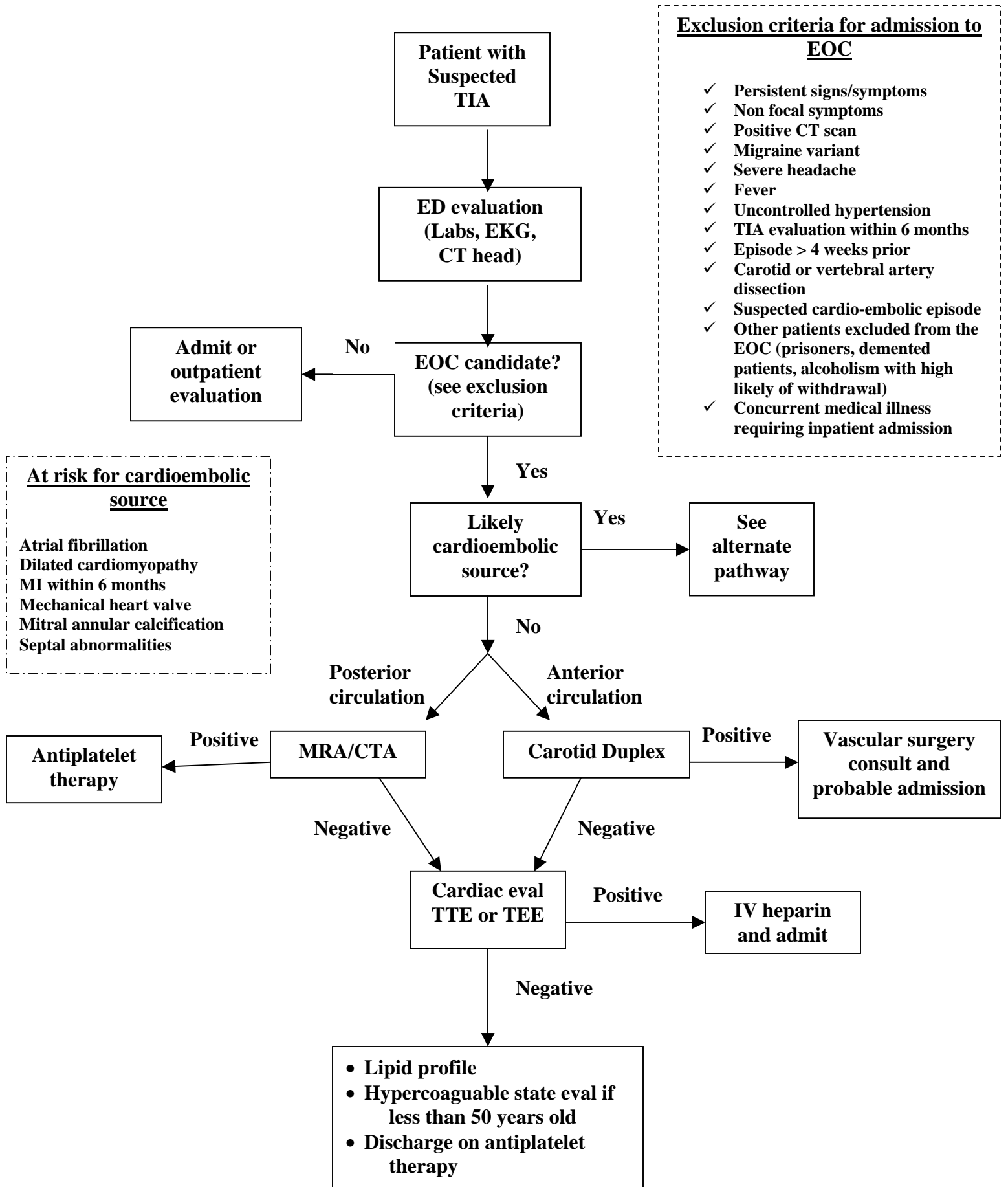


Emergency Observation Center Guidelines for TIA



Alternate Pathway: TIA evaluation with likely cardioembolic source

- At risk for cardioembolic source**
- Atrial fibrillation
 - Dilated cardiomyopathy
 - MI within 6 months
 - Mechanical heart valve
 - Mitral annular calcification
 - Septal abnormalities

