

**Sites (Peoria, Rockford, Urbana, DSCC)  
By Race and Gender**

**Tenured - Sites**

Year	Men	Women	White	Black	Hispanic	Other	All Minorities	Total
Oct-93	55	17	65	0	0	7	7	72
Oct-94	56	16	65	0	0	7	7	72
Oct-95	56	16	66	0	0	6	6	72
Oct-96	51	15	59	0	0	7	7	66
Oct-97	49	12	56	0	0	5	5	61
Oct-98	49	15	58	1	1	4	6	64
Oct-99	49	14	58	1	1	3	5	63
Oct-00	47	13	54	1	2	3	6	60
Oct-01	49	10	53	1	2	3	6	59
Oct-02	42	10	47	1	2	2	5	52

**Tenure-track - Sites**

Year	Men	Women	White	Black	Hispanic	Other	All Minorities	Total
Oct-93	24	8	27	1	0	4	5	32
Oct-94	31	10	35	1	0	5	6	41
Oct-95	22	6	26	1	0	1	2	28
Oct-96	21	9	23	2	2	3	7	30
Oct-97	18	10	21	1	2	4	7	28
Oct-98	18	8	16	0	3	7	10	26
Oct-99	17	5	14	0	1	7	8	22
Oct-00	14	6	12	1	0	7	8	20
Oct-01	14	5	9	1	0	9	10	19
Oct-02	13	5	9	0	1	8	9	18

**Other Faculty - Sites**

Year	Men	Women	White	Black	Hispanic	Other	All Minorities	Total
Oct-93	38	7	38	0	0	7	7	45
Oct-94	35	13	42	0	0	6	6	48
Oct-95	32	13	37	0	1	7	8	45
Oct-96	37	14	43	0	1	7	8	51
Oct-97	44	17	50	1	1	9	11	61
Oct-98	46	14	49	0	1	10	11	60
Oct-99	44	16	44	1	3	12	16	60
Oct-00	39	20	43	0	4	12	16	59
Oct-01	37	23	43	0	3	14	17	60
Oct-02	50	27	54	2	3	18	23	77

**Sites (Peoria, Rockford, Urbana, DSCC)  
By Race and Gender**

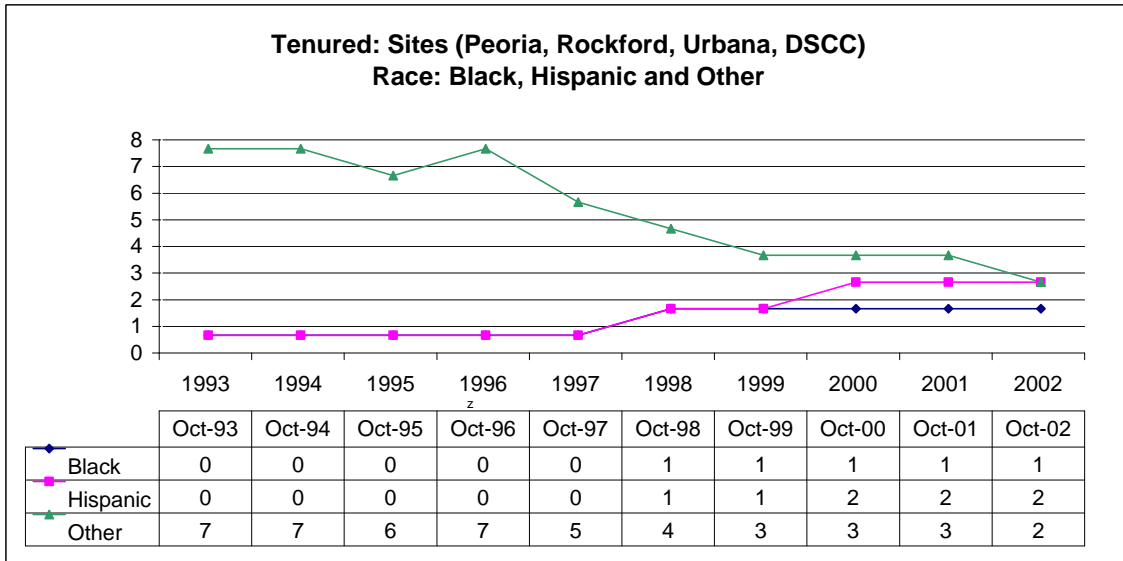
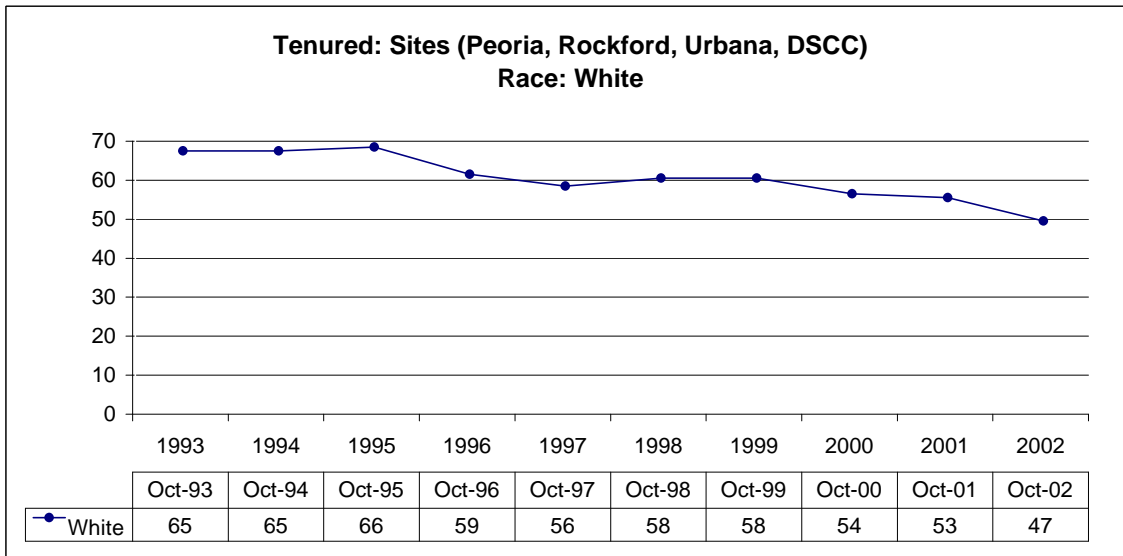
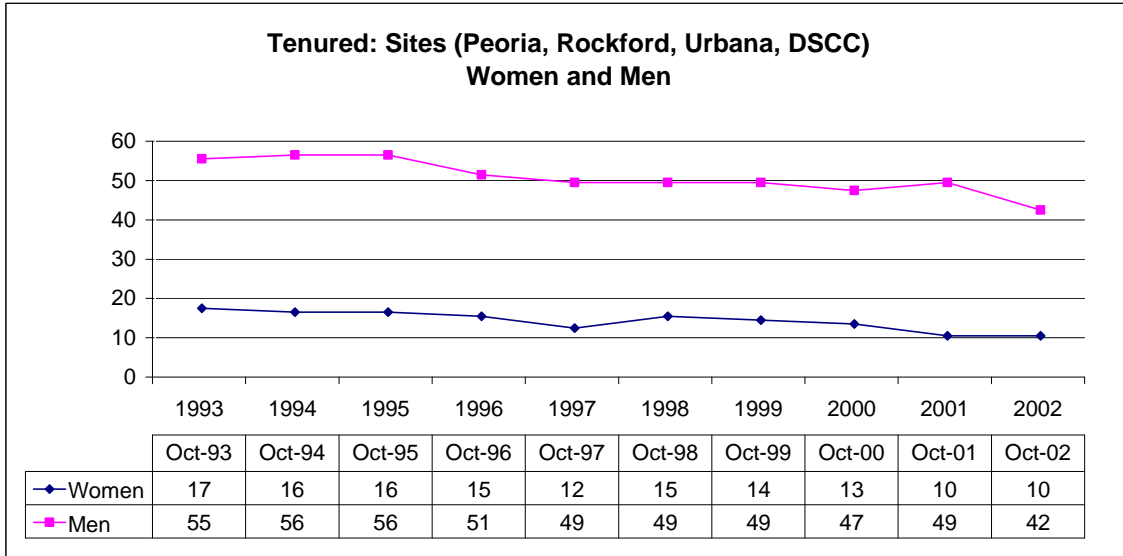
**Administrators - Sites**

Year	Men	Women	White	Black	Hispanic	Other	All Minorities	Total
Oct-93	22	7	27	1	0	1	2	29
Oct-94	22	8	27	2	0	1	3	30
Oct-95	21	9	27	2	0	1	3	30
Oct-96	24	8	30	1	0	1	2	32
Oct-97	21	11	29	1	0	2	3	32
Oct-98	20	10	28	1	0	1	2	30
Oct-99	29	14	39	1	0	3	4	43
Oct-00	39	18	53	1	0	3	4	57
Oct-01	37	19	52	1	0	3	4	56
Oct-02	34	15	47	1	0	1	2	49

**Acad Prof - Sites**

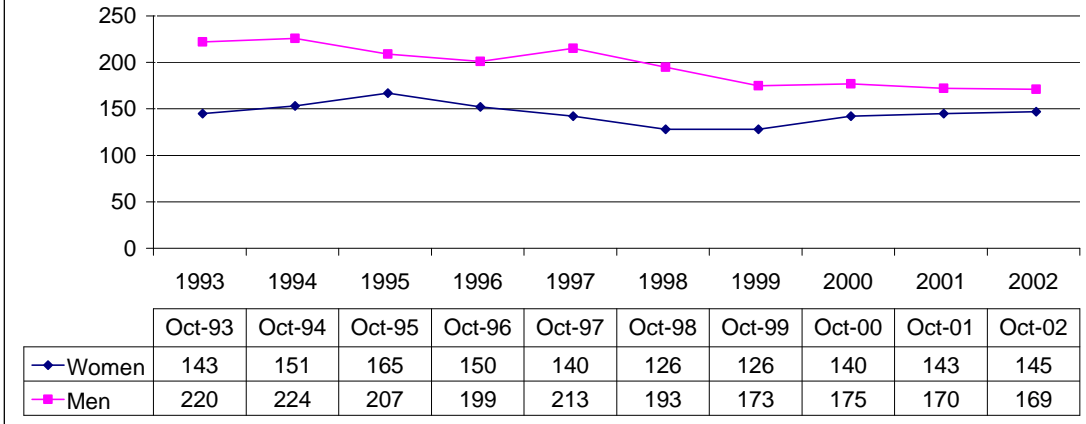
Year	Men	Women	White	Black	Hispanic	Other	All Minorities	Total
Oct-93	16	34	48	0	0	2	2	50
Oct-94	11	26	35	0	0	2	2	37
Oct-95	14	33	44	0	0	3	3	47
Oct-96	13	31	39	1	0	4	5	44
Oct-97	20	36	51	0	0	5	5	56
Oct-98	21	43	59	0	0	5	5	64
Oct-99	22	46	64	0	0	4	4	68
Oct-00	17	53	63	0	1	6	7	70
Oct-01	19	58	69	0	1	7	8	77
Oct-02	17	63	73	0	1	6	7	80

**Sites (Peoria, Rockford, Urbana, DSCC)  
By Race and Gender**

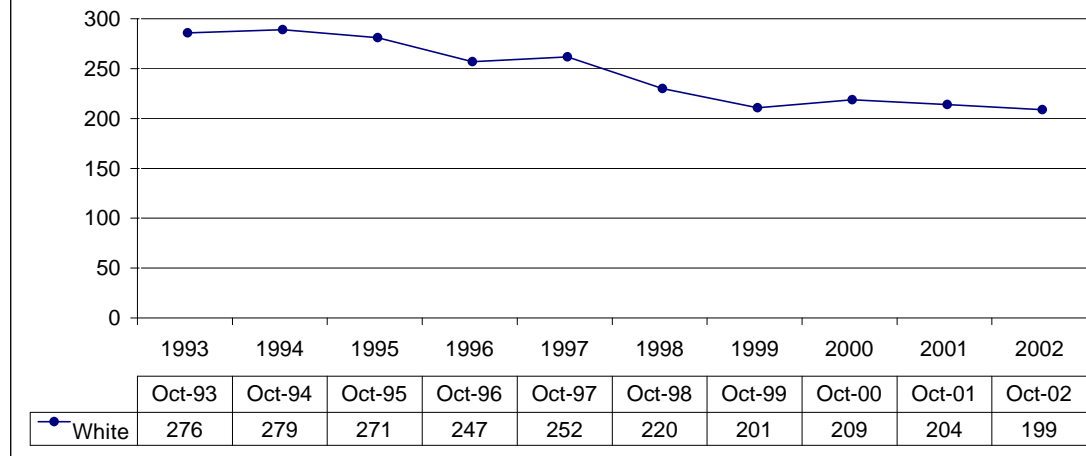


**Sites (Peoria, Rockford, Urbana, DSCC)  
By Race and Gender**

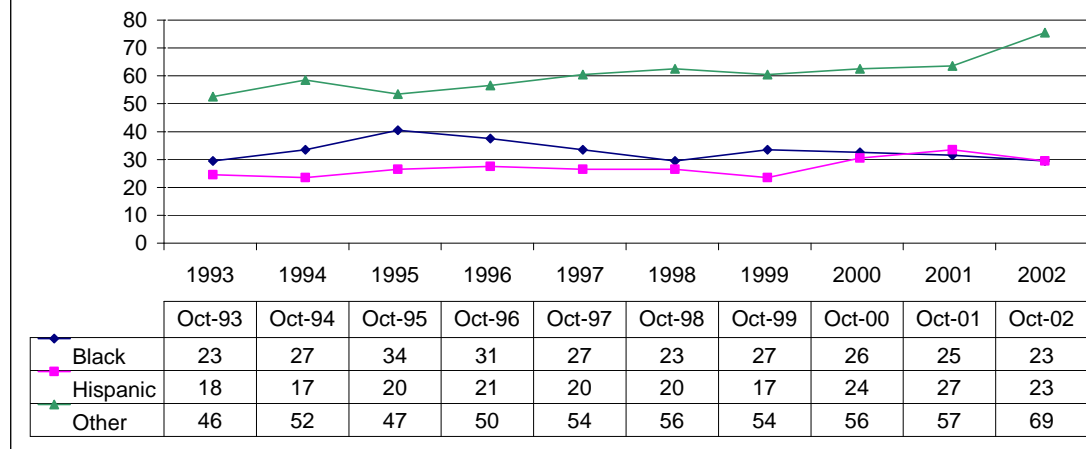
**Tenure-track: Sites (Peoria, Rockford, Urbana, DSCC)  
Women and Men**



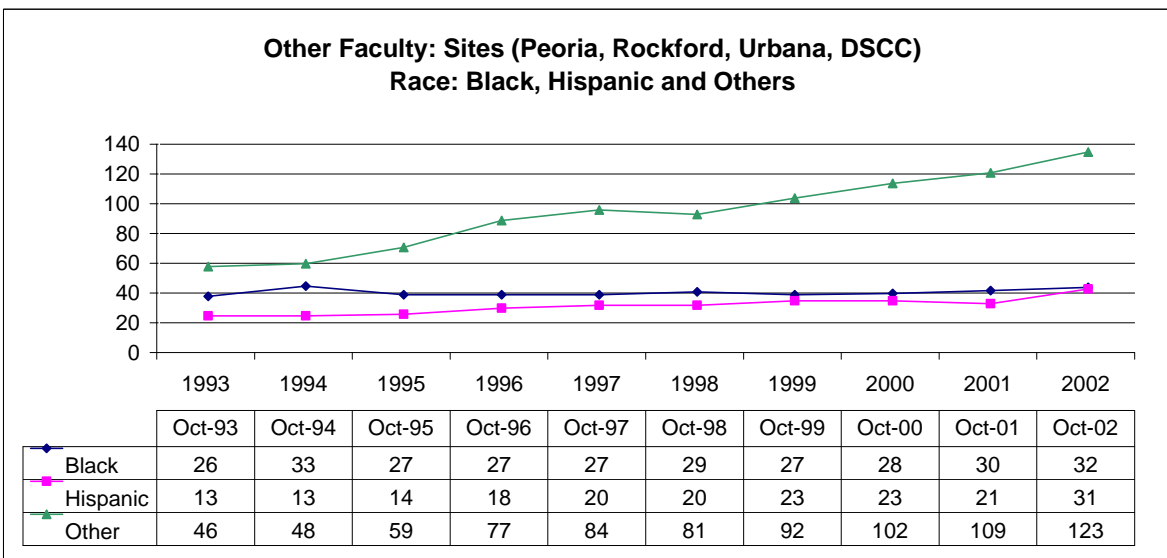
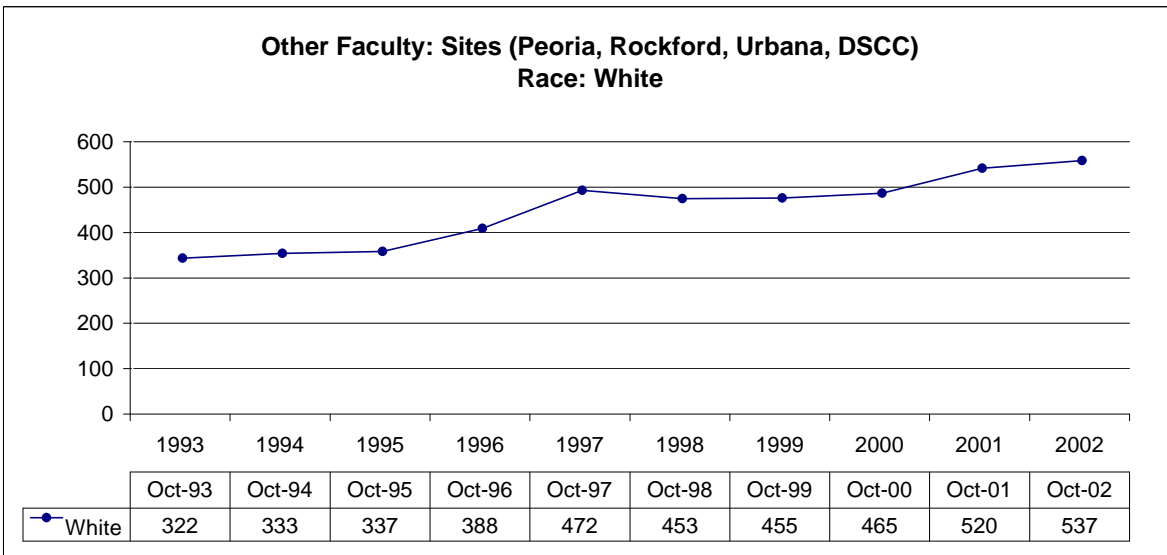
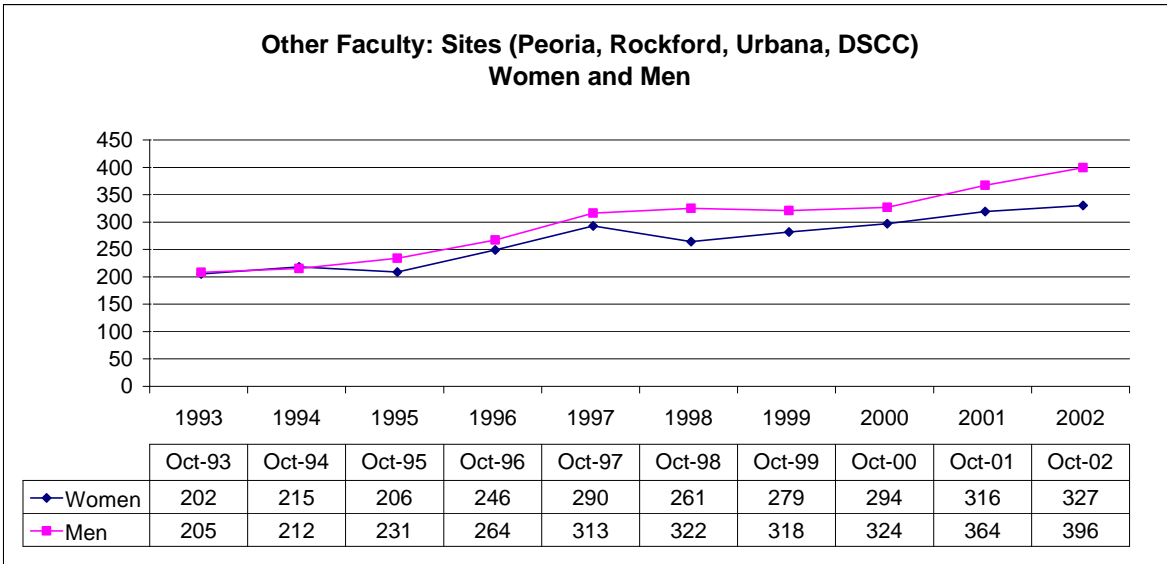
**Tenure-track: Sites (Peoria, Rockford, Urbana, DSCC)  
Race: White**



**Tenure-track: Sites (Peoria, Rockford, Urbana, DSCC)  
Race: Black, Hispanic and Other**

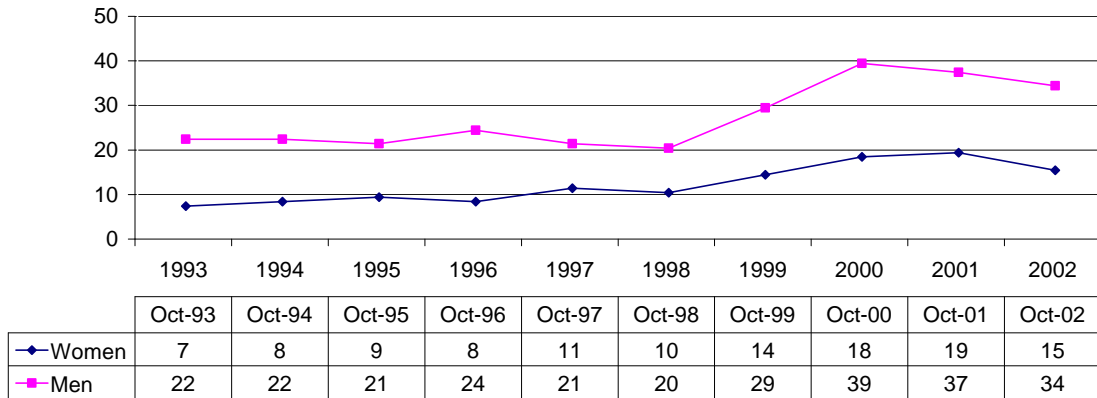


**Sites (Peoria, Rockford, Urbana, DSCC)  
By Race and Gender**

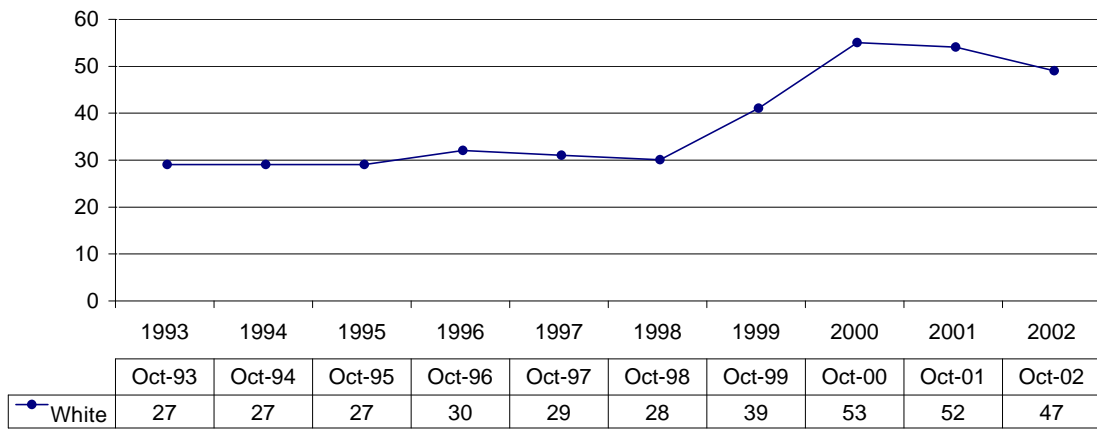


**Sites (Peoria, Rockford, Urbana, DSCC)  
By Race and Gender**

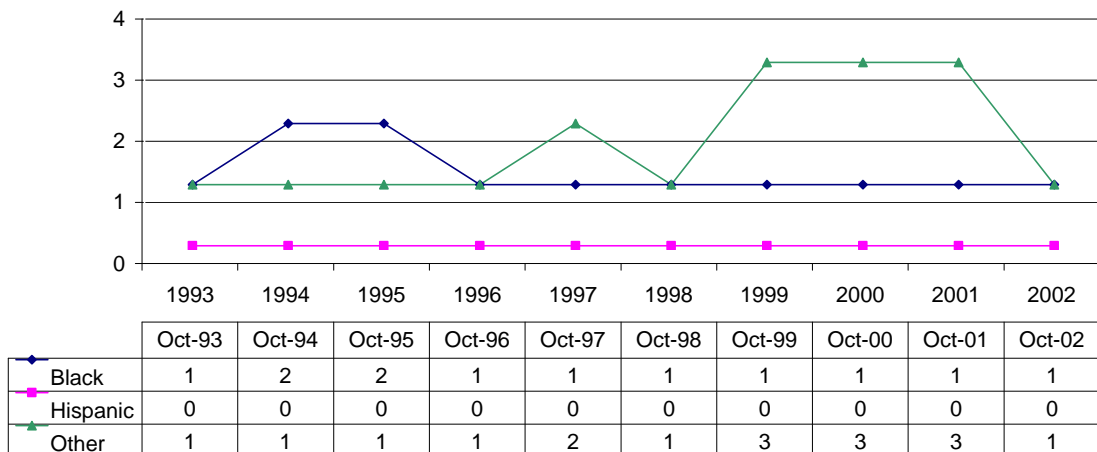
**Administrators: Sites (Peoria, Rockford, Urbana, DSCC)  
Women and Men**



**Administrators: Sites (Peoria, Rockford, Urbana, DSCC)  
Race: White**

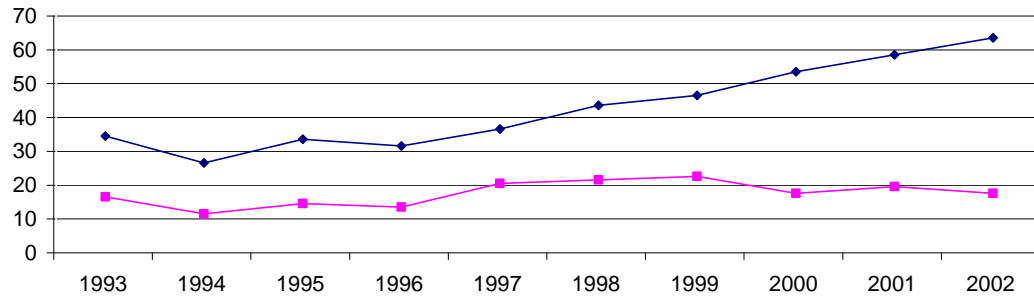


**Administrators: Sites (Peoria, Rockford, Urbana, DSCC)  
Race: Black, Hispanic and Other**



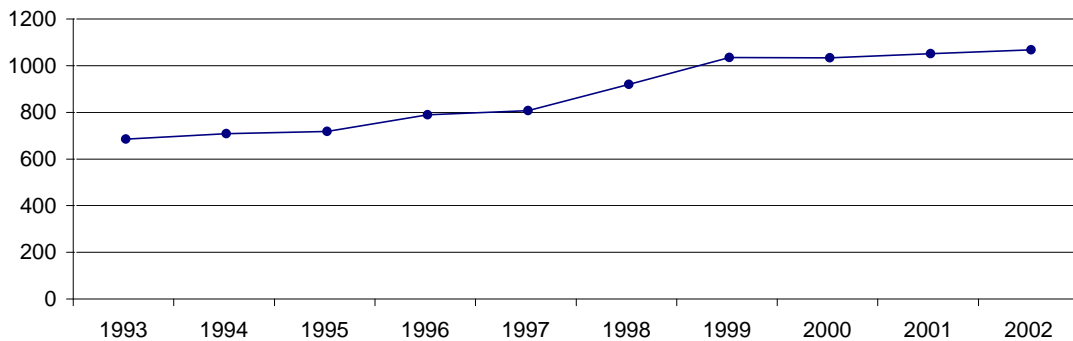
**Sites (Peoria, Rockford, Urbana, DSCC)  
By Race and Gender**

**Academic Professionals : Sites (Peoria, Rockford and Urbana, DSCC)  
Women and Men**



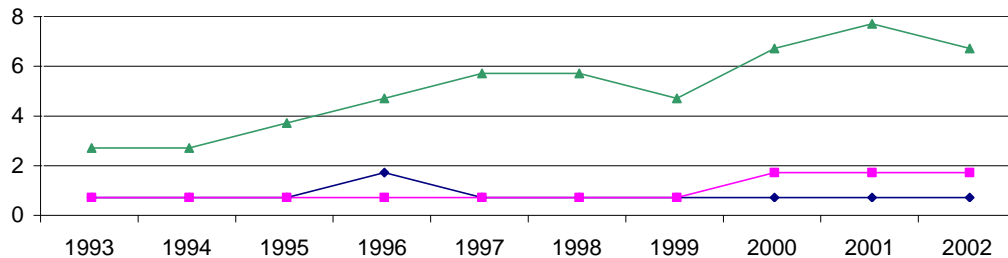
	1993	1994	1995	1996	1997	1998	1999	2000	2001	2002
	Oct-93	Oct-94	Oct-95	Oct-96	Oct-97	Oct-98	Oct-99	Oct-00	Oct-01	Oct-02
—◆— Women	34	26	33	31	36	43	46	53	58	63
—■— Men	16	11	14	13	20	21	22	17	19	17

**Academic Professionals: Sites (Peoria, Rockford, Urbana, DSCC)  
Race: White**



	1993	1994	1995	1996	1997	1998	1999	2000	2001	2002
	Oct-93	Oct-94	Oct-95	Oct-96	Oct-97	Oct-98	Oct-99	Oct-00	Oct-01	Oct-02
—●— White	643	667	676	748	765	878	993	992	1009	1026

**Academic Professionals Sites (Peoria, Rockford, Urbana, DSCC)  
Race: Black, Hispanic and Other**



	1993	1994	1995	1996	1997	1998	1999	2000	2001	2002
	Oct-93	Oct-94	Oct-95	Oct-96	Oct-97	Oct-98	Oct-99	Oct-00	Oct-01	Oct-02
—◆— Black	0	0	0	1	0	0	0	0	0	0
—■— Hispanic	0	0	0	0	0	0	0	1	1	1
—▲— Other	2	2	3	4	5	5	4	6	7	6