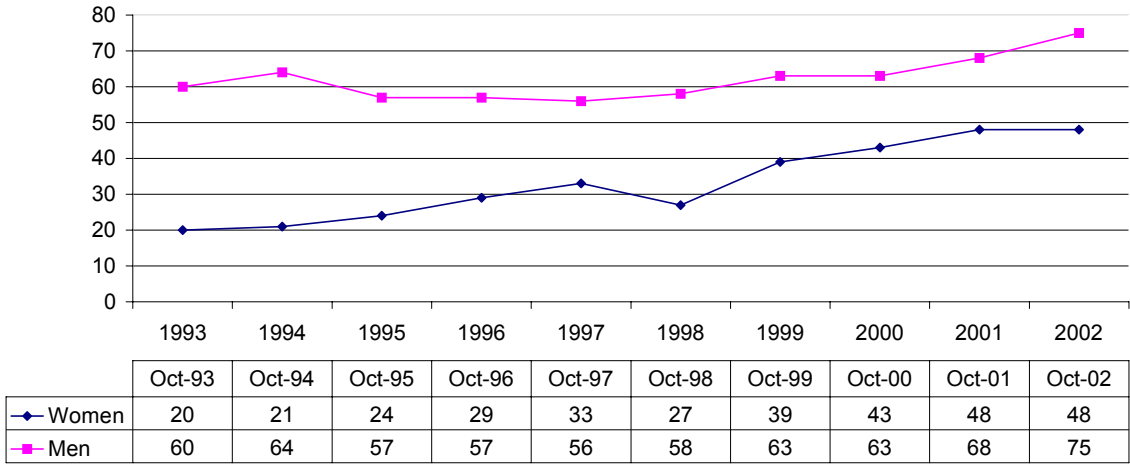


**College of Medicine - Peoria**  
**Total employment excluding support staff**  
**By Race and Gender**

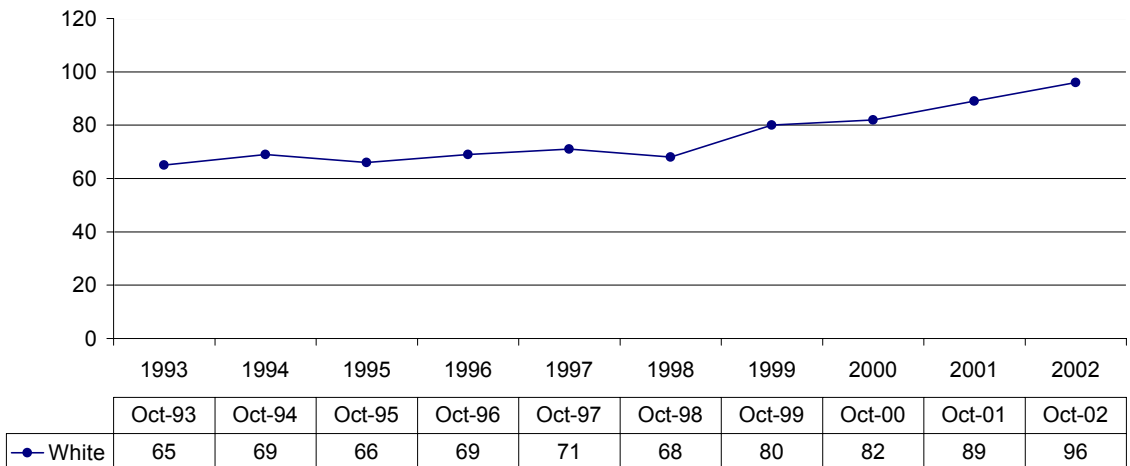
**College of Medicine - Peoria**

Year	Men	Women	White	Black	Hispanic	Other	All Minorities	Total
Oct-93	60	20	65	1	0	14	15	80
Oct-94	64	21	69	1	0	15	16	85
Oct-95	57	24	66	1	1	13	15	81
Oct-96	57	29	69	2	1	14	17	86
Oct-97	56	33	71	1	1	16	18	89
Oct-98	58	27	68	0	3	14	17	85
Oct-99	63	39	80	0	3	19	22	102
Oct-00	63	43	82	0	4	20	24	106
Oct-01	68	48	89	0	4	23	27	116
Oct-02	75	48	96	0	4	23	27	123

**College of Medicine - Peoria**  
**Total employment excluding support staff - Women and Men**



**College of Medicine - Peoria**  
**Total Employment excluding support staff - Race: White**



**College of Medicine - Peoria  
Total employment excluding support staff  
By Race and Gender**

