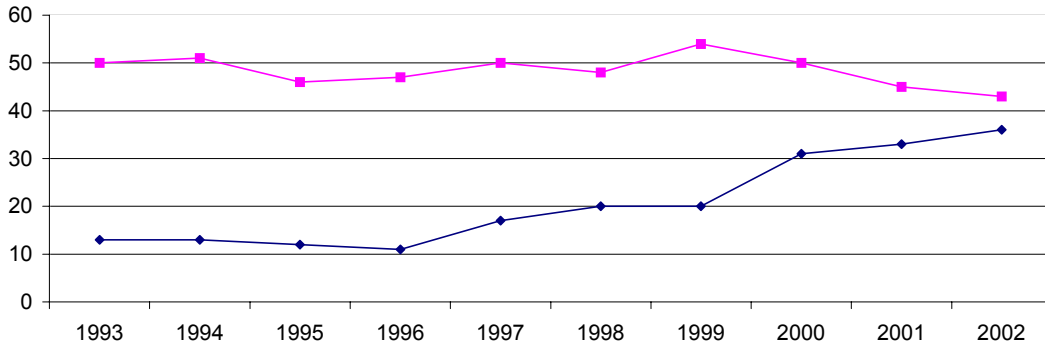


College of Medicine - Rockford
Total employment excluding support staff
By Race and Gender

College of Medicine - Rockford

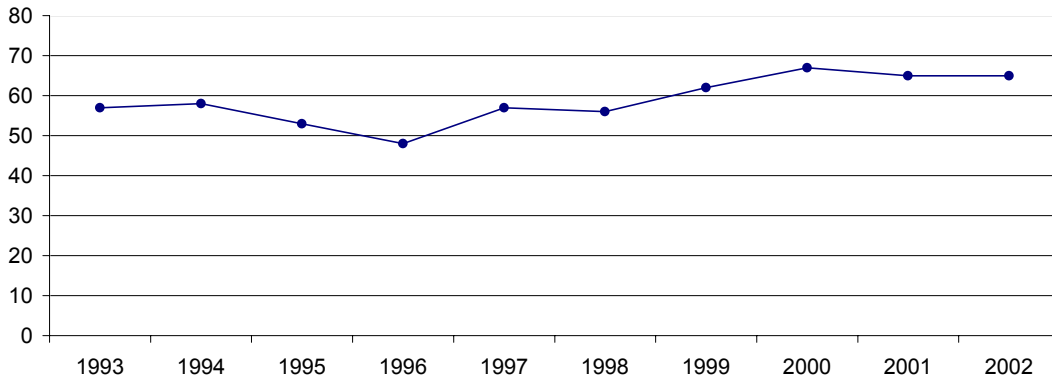
Year	Men	Women	White	Black	Hispanic	Other	All Minorities	Total
Oct-93	50	13	57	0	0	6	6	63
Oct-94	51	13	58	0	0	6	6	64
Oct-95	46	12	53	0	0	5	5	58
Oct-96	47	11	48	1	2	7	10	58
Oct-97	50	17	57	0	2	8	10	67
Oct-98	48	20	56	0	2	10	12	68
Oct-99	54	20	62	0	2	10	12	74
Oct-00	50	31	67	1	3	10	14	81
Oct-01	45	33	65	1	2	10	13	78
Oct-02	43	36	65	2	3	9	14	79

College of Medicine - Rockford
Total employment excluding support staff - Women and Men



	Oct-93	Oct-94	Oct-95	Oct-96	Oct-97	Oct-98	Oct-99	Oct-00	Oct-01	Oct-02
— Women	13	13	12	11	17	20	20	31	33	36
— Men	50	51	46	47	50	48	54	50	45	43

College of Medicine - Rockford
Total Employment excluding support staff - Race: White



	Oct-93	Oct-94	Oct-95	Oct-96	Oct-97	Oct-98	Oct-99	Oct-00	Oct-01	Oct-02
— White	57	58	53	48	57	56	62	67	65	65

**College of Medicine - Rockford
Total employment excluding support staff
By Race and Gender**

