

College of Business Administration - Race and Gender

Administrators and Executives

Year	Men	Women	White	Black	Hispanic	Other	All Minorities	Total
Oct-93	4	7	7	3	0	0	3	10
Oct-94	4	6	7	3	0	0	3	10
Oct-95	4	7	9	2	0	0	2	11
Oct-96	5	9	11	2	0	1	3	14
Oct-97	2	10	8	2	0	2	4	12
Oct-98	6	8	10	2	1	1	4	14
Oct-99	7	17	18	2	2	2	6	24
Oct-00	12	19	22	3	2	4	9	31
Oct-01	13	22	27	2	2	4	8	35
Oct-02	11	16	21	1	2	3	6	27

Tenured

Year	Men	Women	White	Black	Hispanic	Other	All Minorities	Total
Oct-93	47	7	44	0	3	7	10	54
Oct-94	47	7	41	0	4	9	13	54
Oct-95	51	7	43	1	4	10	15	58
Oct-96	50	6	42	1	3	10	14	56
Oct-97	47	6	37	1	3	12	16	53
Oct-98	45	7	35	1	3	13	17	52
Oct-99	47	7	36	0	3	15	18	54
Oct-00	47	6	36	0	3	14	17	53
Oct-01	42	6	33	0	3	12	15	48
Oct-02	41	5	31	0	2	13	15	46

Tenure-track

Year	Men	Women	White	Black	Hispanic	Other	All Minorities	Total
Oct-93	18	2	8	2	1	9	12	20
Oct-94	14	2	6	2	0	8	10	16
Oct-95	11	2	4	2	0	7	9	13
Oct-96	9	2	4	2	0	5	7	11
Oct-97	10	3	7	2	0	4	6	13
Oct-98	9	4	7	2	0	4	6	13
Oct-99	10	6	8	1	1	6	8	16
Oct-00	15	8	11	1	2	9	12	23
Oct-01	16	10	11	2	3	10	15	26
Oct-02	15	10	9	1	3	12	16	25

Non-tenured

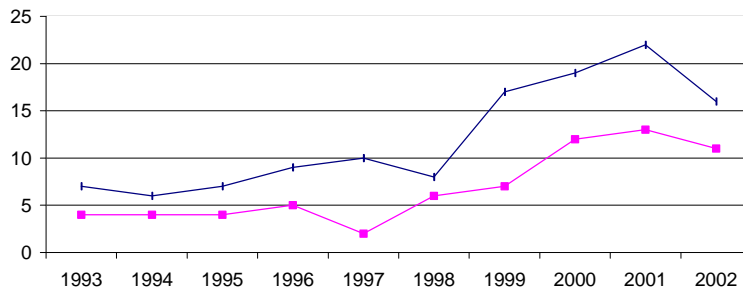
Year	Men	Women	White	Black	Hispanic	Other	All Minorities	Total
Oct-93	8	2	8	1	0	1	2	10
Oct-94	7	5	10	2	0	0	2	12
Oct-95	7	3	9	1	0	0	1	10
Oct-96	8	3	9	2	0	0	2	11
Oct-97	10	3	11	2	0	0	2	13
Oct-98	14	5	14	2	0	3	5	19
Oct-99	16	6	16	3	0	3	6	22
Oct-00	19	6	18	2	0	5	7	25
Oct-01	17	5	18	2	0	2	4	22
Oct-02	18	6	19	2	0	3	5	24

Academic Professionals

Year	Men	Women	White	Black	Hispanic	Other	All Minorities	Total
Oct-93	1	5	2	3	1	0	4	6
Oct-94	1	6	3	3	1	0	4	7
Oct-95	0	8	4	3	1	0	4	8
Oct-96	1	8	6	1	1	1	3	9
Oct-97	2	11	8	1	3	1	5	13
Oct-98	4	10	10	1	2	1	4	14
Oct-99	3	9	9	1	1	1	3	12
Oct-00	4	13	12	2	0	3	5	17
Oct-01	4	8	8	1	1	2	4	12
Oct-02	5	12	12	1	1	3	5	17

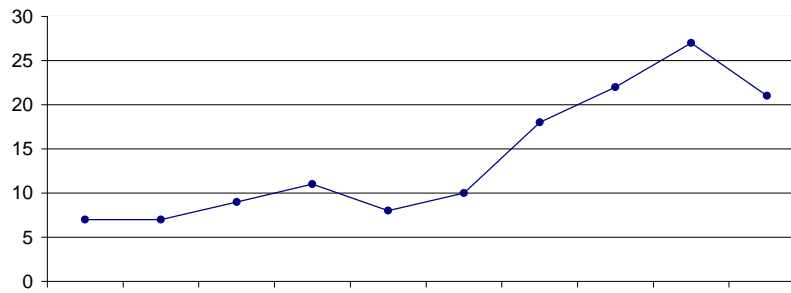
College of Business Administration - Race and Gender

College of Business Administration
Administrators and Executives - Women and Men



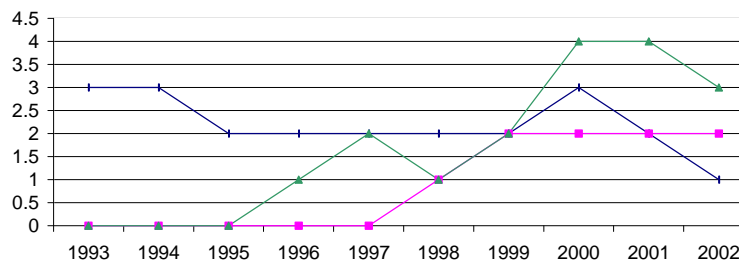
	Oct-93	Oct-94	Oct-95	Oct-96	Oct-97	Oct-98	Oct-99	Oct-00	Oct-01	Oct-02
Women	7	6	7	9	10	8	17	19	22	16
Men	4	4	4	5	2	6	7	12	13	11

College of Business Administration
Administrators and Executives: Race - White



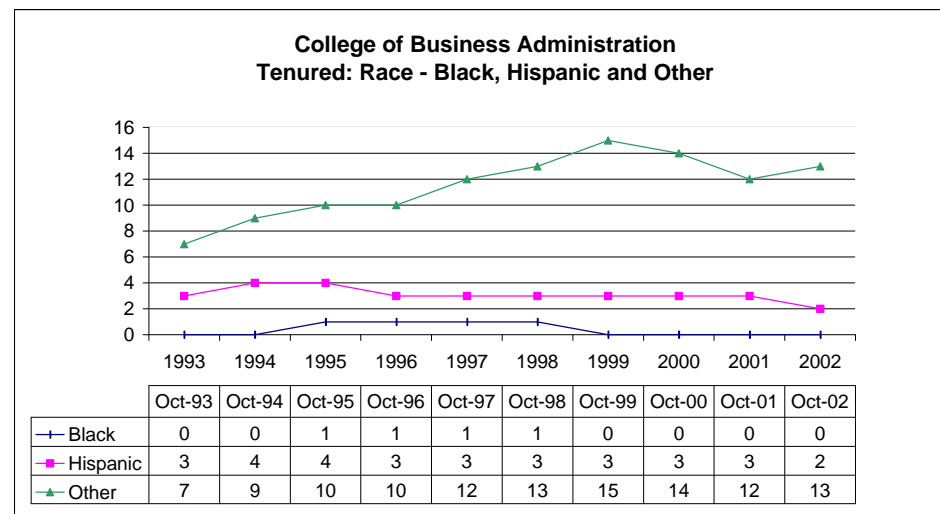
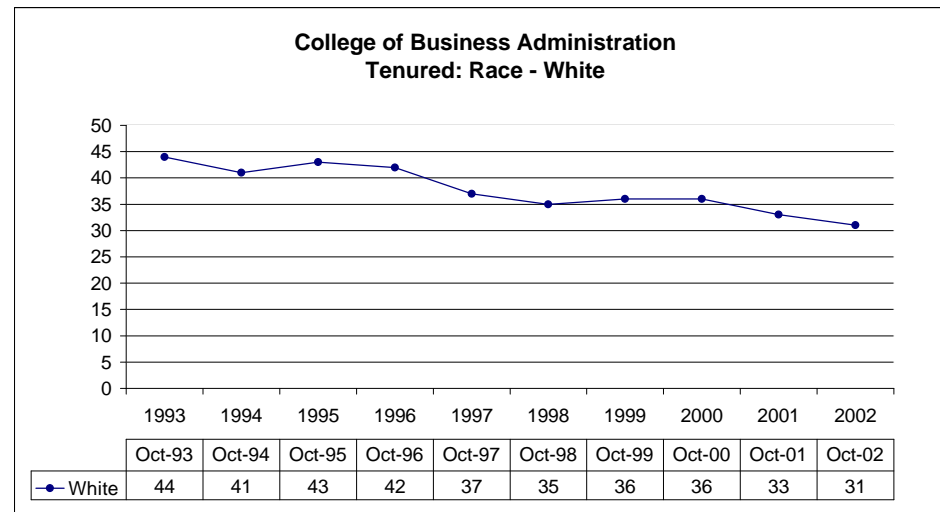
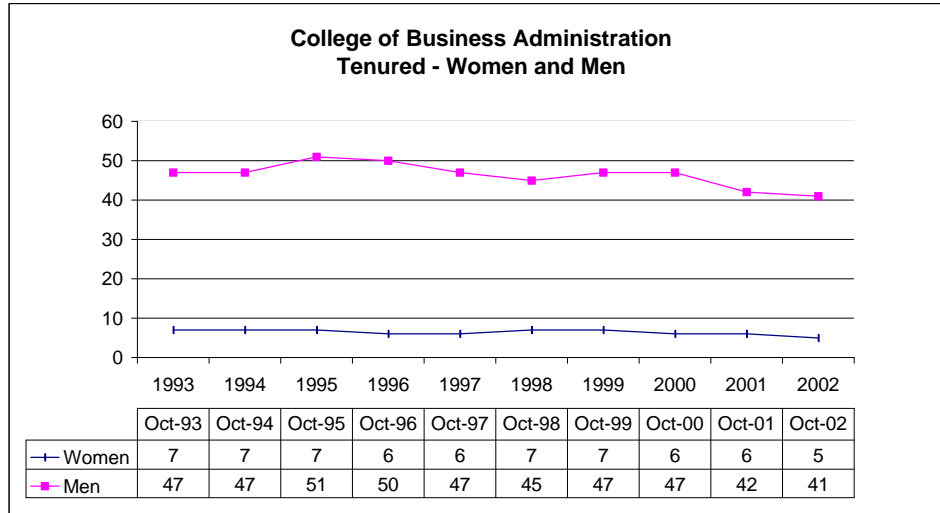
	Oct-93	Oct-94	Oct-95	Oct-96	Oct-97	Oct-98	Oct-99	Oct-00	Oct-01	Oct-02
White	7	7	9	11	8	10	18	22	27	21

College of Business Administration
Administrators and Executives: Race - Black, Hispanic and Other

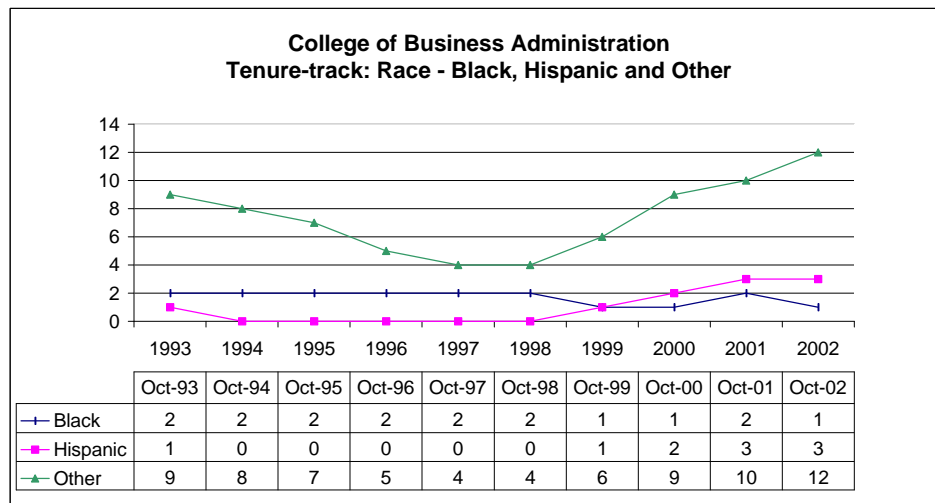
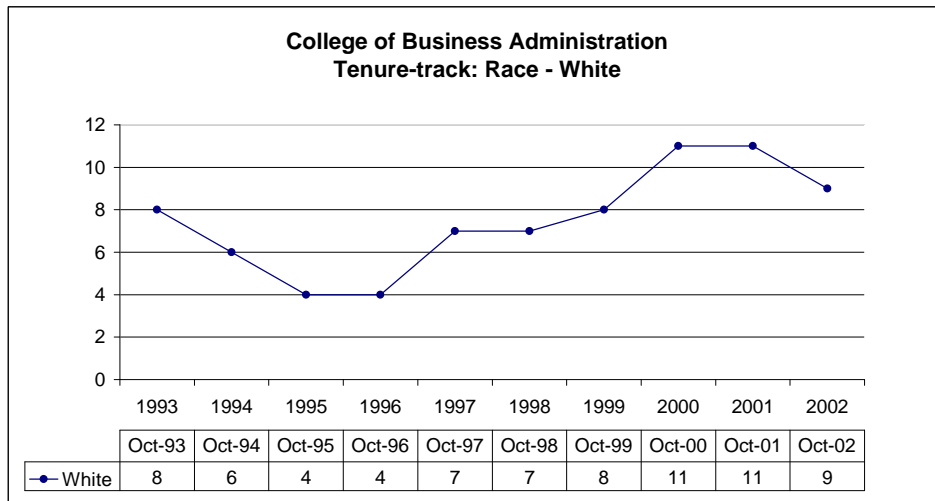
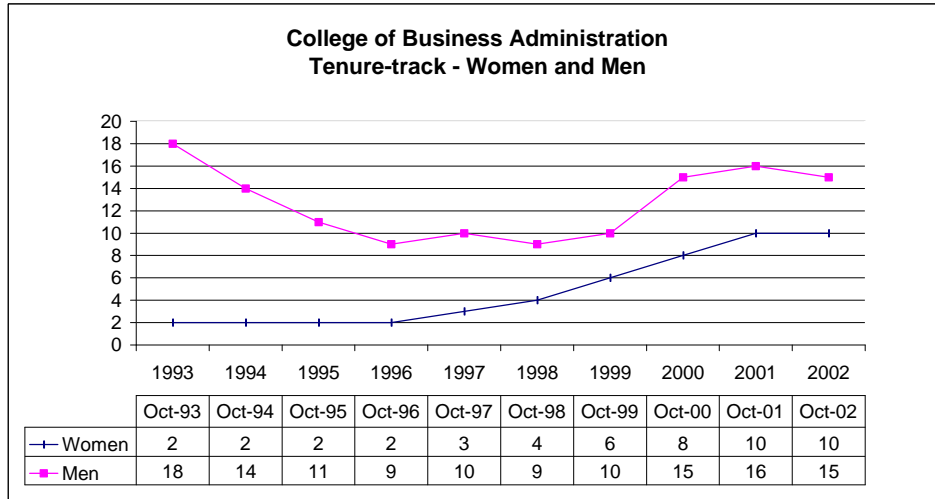


	Oct-93	Oct-94	Oct-95	Oct-96	Oct-97	Oct-98	Oct-99	Oct-00	Oct-01	Oct-02
Black	3	3	2	2	2	2	2	3	2	1
Hispanic	0	0	0	0	0	1	2	2	2	2
Other	0	0	0	1	2	1	2	4	4	3

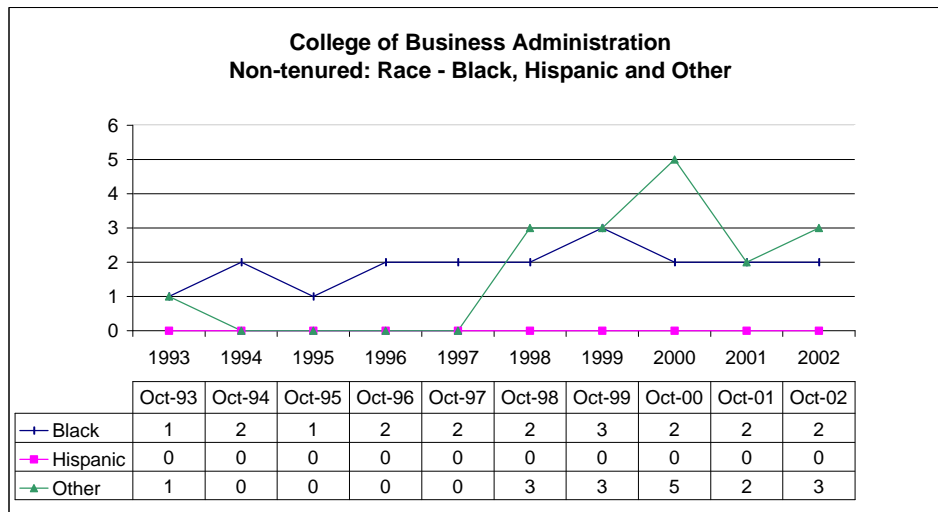
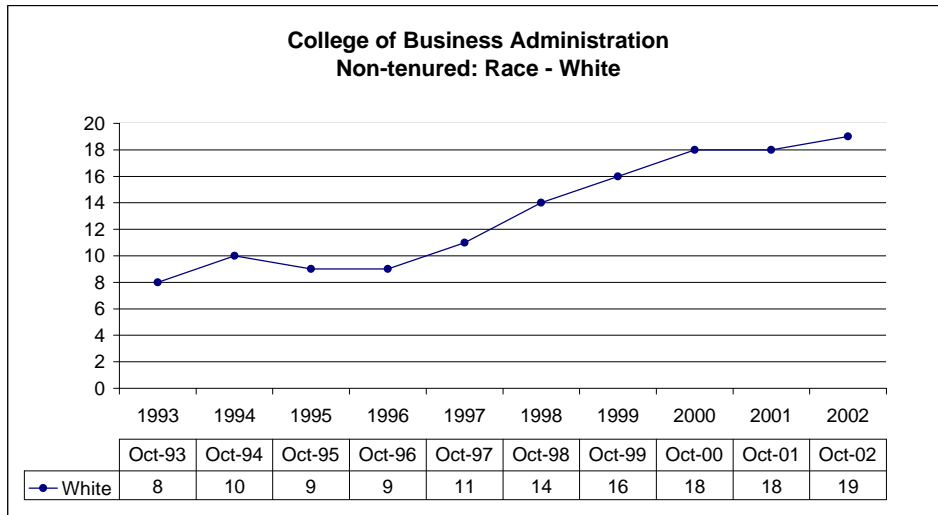
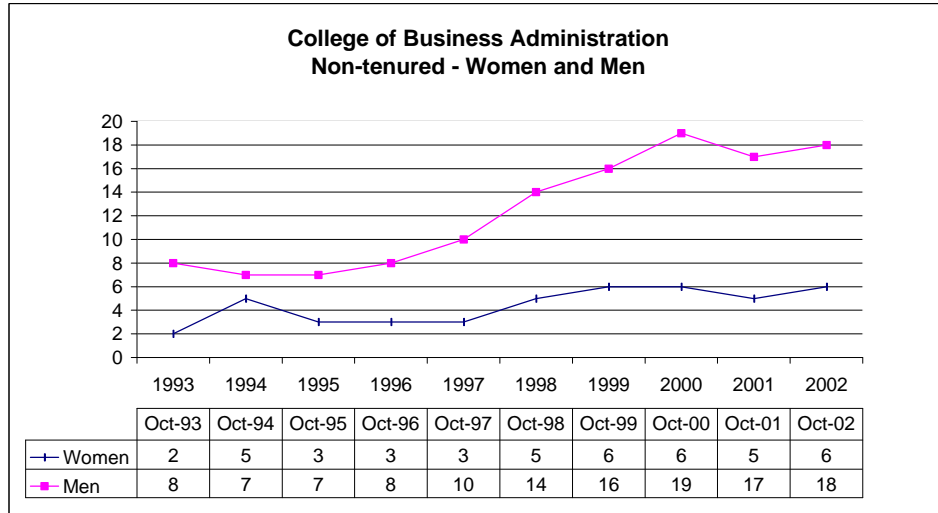
College of Business Administration - Race and Gender



College of Business Administration - Race and Gender



College of Business Administration - Race and Gender



College of Business Administration - Race and Gender

