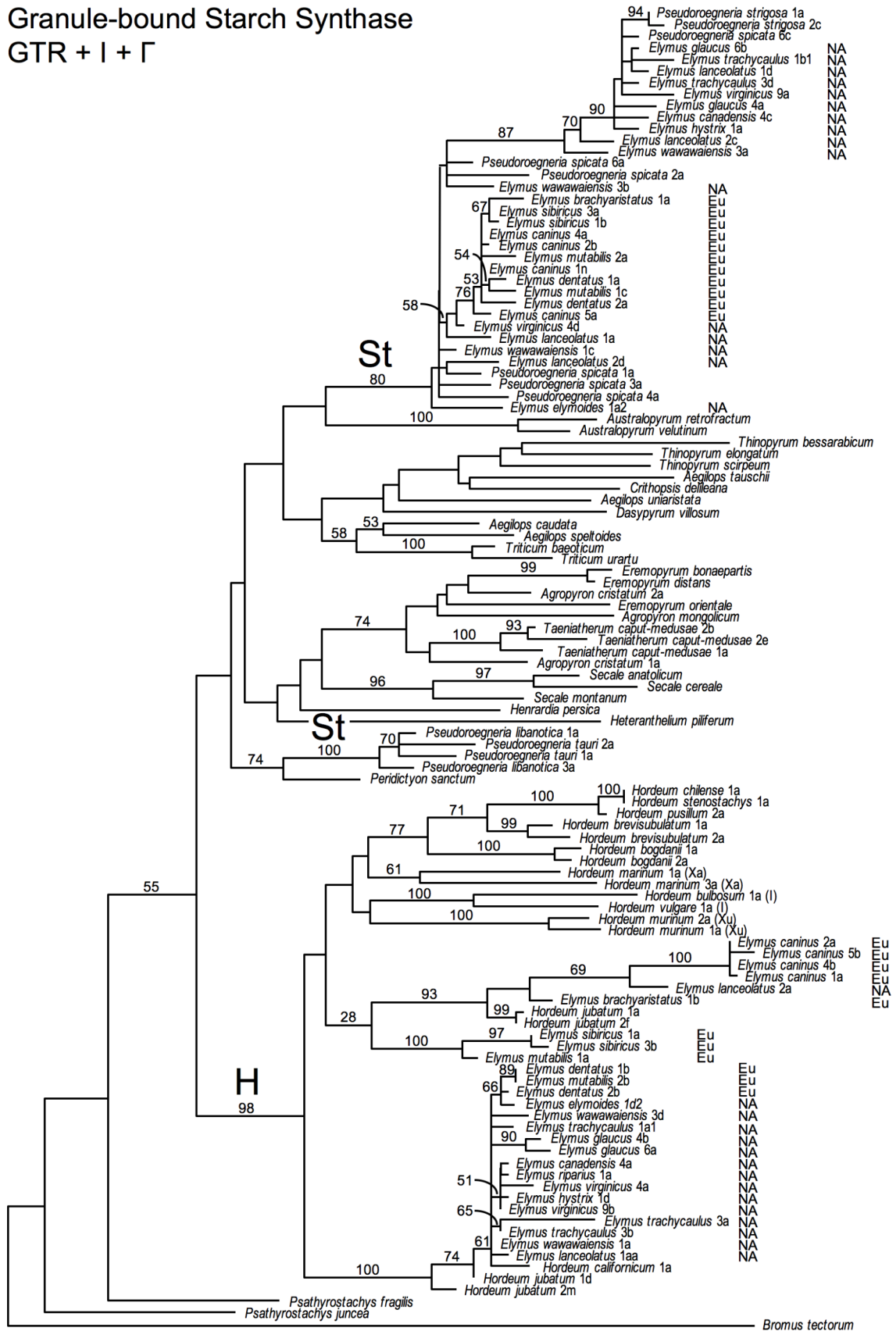


Granule-bound Starch Synthase GTR + I + Γ



Granule-bound starch synthase gene tree. The best-scoring ML tree was selected from 30 GARLI analyses of the GBSSI sequence data set under a GTR+I+Γ model of sequence evolution. Numbers above branches show ML bootstrap support 50%; the 28% value is mentioned in the text. “NA” and “Eu” distinguish North American and Eurasian *Elymus* species, respectively. Where applicable, numbers following taxon names distinguish individuals within species. Letters following these numbers designate cloned sequences from within individuals.