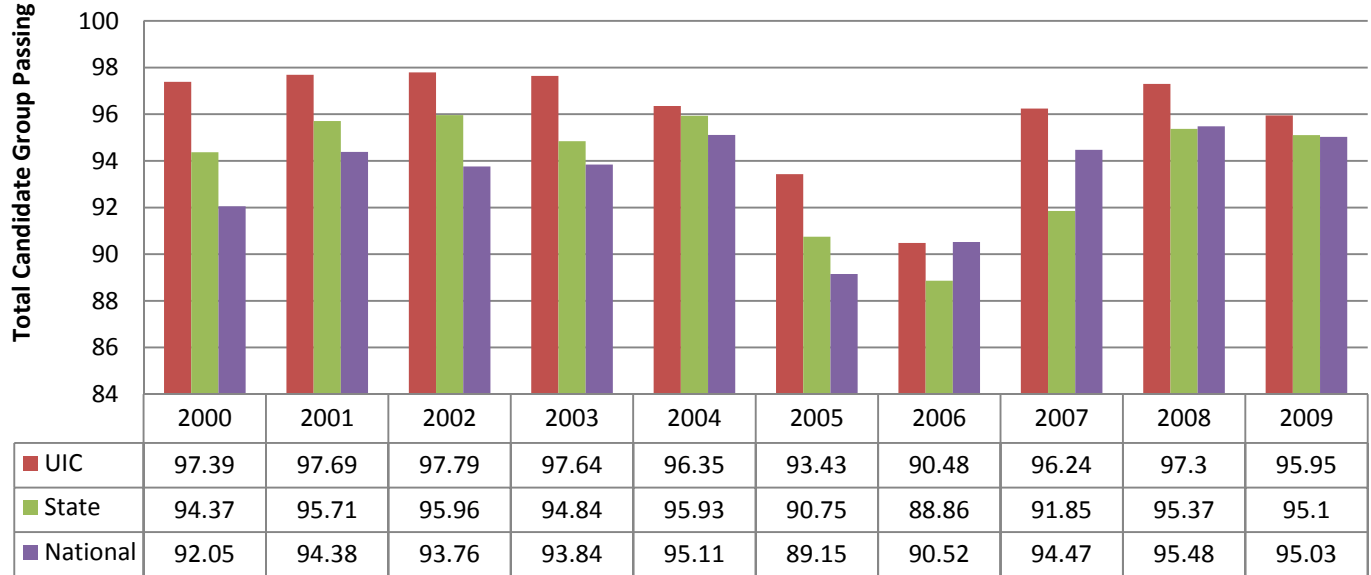


## UIC NAPLEX Passing Rates vs State/National Passing Rates



### [North American Pharmacist Licensure Examination® \(NAPLEX®\)](#)

The NAPLEX is developed by the National Association of Boards of Pharmacy® (NABP®) and is utilized by the boards of pharmacy as part of their assessment of competence to practice pharmacy.

The NAPLEX is a 185-item computer-based examination that uses adaptive test technology to deliver a mixture of selected-response and constructed-response test questions. Of the 185 delivered questions, 150 are operational and will be used to calculate your test score. The remaining 35 questions are pretest items and will not count towards your NAPLEX score. Pretest questions are included on all NAPLEX examinations and are administered to evaluate their appropriateness for possible inclusion in future examinations. The pretest questions are dispersed throughout the examination and cannot be identified by the candidate.

A majority of the questions on the NAPLEX are asked in a scenario-based format (ie, patient profiles with accompanying test questions). To properly analyze and answer the questions presented, you must refer to the information provided in the patient profile. Other questions are answered solely from the information provided in the question.

Also available from NABP is the Pre-NAPLEX®. Preparing for the NAPLEX is much easier when students use the Pre-NAPLEX. The only NAPLEX practice examination written and developed by the NABP, the Pre-NAPLEX will familiarize candidates with the NAPLEX testing experience.

### [Multistate Pharmacy Jurisprudence Examination® \(MPJE®\)](#)

The computer-adaptive MPJE combines federal- and state-specific law questions to serve as the state law examination in participating jurisdictions. The MPJE is based on a national blueprint of pharmacy jurisprudence competencies; however, the questions are tailored to the specific laws in each state. The MPJE consists of 90 multiple-choice test questions. Of these, 60 questions will be used to calculate the test score. The remaining 30 items serve as pretest questions, and do **not** affect the MPJE score. Those pretest questions are dispersed throughout the examination and cannot be identified by the candidate.<sup>1</sup>

### [Pharmacy Exam Review Course](#)

On-line Pharmacy Exam Review Course offered by Midwestern University Chicago College of Pharmacy.

<sup>1</sup> NABP, NAPLEX and MPJE Competency Assessment, <http://www.nabp.net>