

*Leadership, Legacy, and Community:  
A Retreat to Advance  
Maternal and Child Health  
Scholarship and Practice*

*Intergenerational, Interdisciplinary Practitioners and Scholars  
Working Together to Improve Maternal and Child Health*

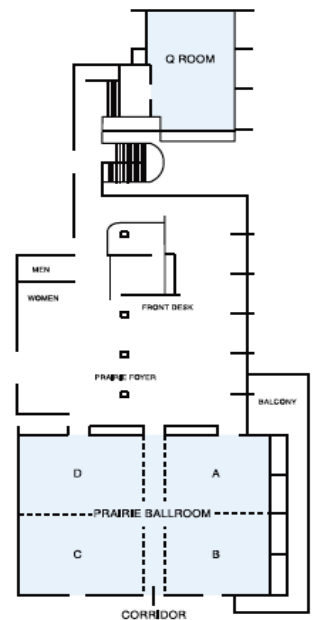
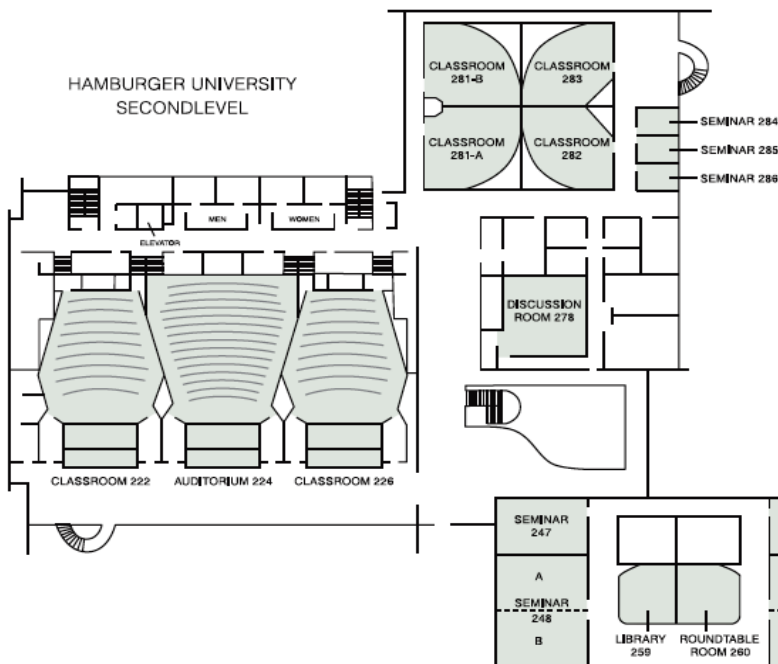
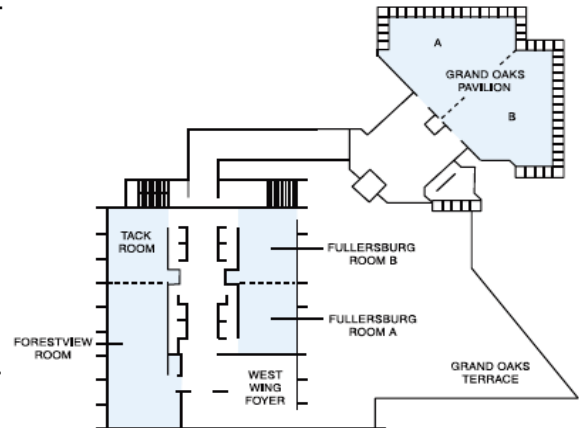
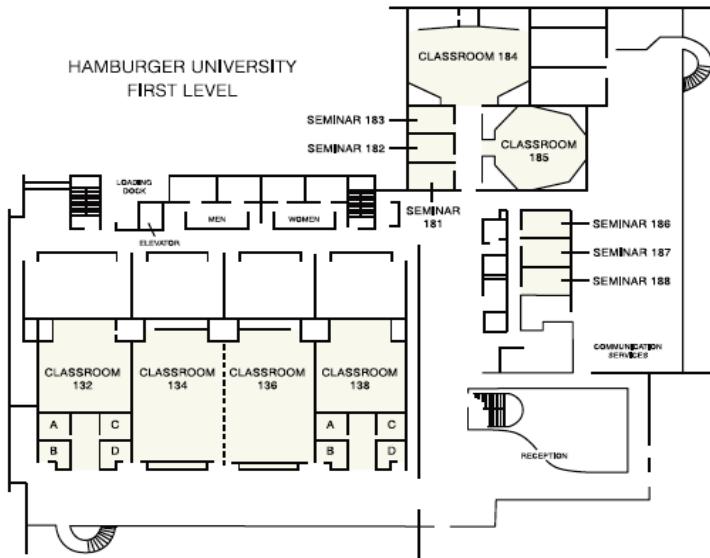
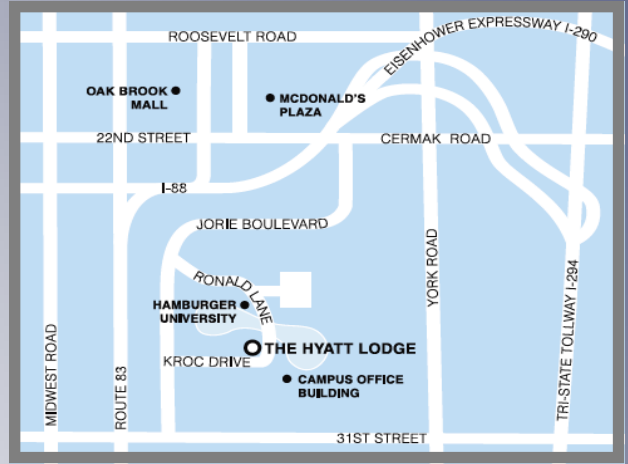


*The Maternal and Child Health Program  
School of Public Health  
Community Health Sciences  
University of Illinois at Chicago*

*July 25-27, 2011  
Hyatt Lodge  
Oak Brook, IL*

# Maps

*The Hyatt Lodge*  
 2815 Jorie Boulevard  
 Oak Brook, Illinois 60523



## *Table of Contents*

<i>Maps.....</i>	<i>2</i>
<i>Welcome.....</i>	<i>4</i>
<i>About UIC MCHP.....</i>	<i>4</i>
<i>General Information .....</i>	<i>5-6</i>
<i>Hotel.....</i>	<i>5</i>
<i>Continuing Education Credits.....</i>	<i>6</i>
<i>Retreat Evaluation.....</i>	<i>6</i>
<i>Professional Coaching.....</i>	<i>6</i>
<i>Program- at-a-glance.....</i>	<i>7</i>
<i>Detailed Retreat Program.....</i>	<i>8-11</i>
<i>Monday.....</i>	<i>8-9</i>
<i>Tuesday.....</i>	<i>9-10</i>
<i>Wednesday.....</i>	<i>10-11</i>
<i>Self-Reflection/Notes.....</i>	<i>11-14</i>
<i>Special Thanks.....</i>	<i>14</i>
<i>Sponsors.....</i>	<i>14</i>
<i>Faculty &amp; Staff.....</i>	<i>15</i>

## Welcome

Welcome to *Leadership, Legacy, and Community: A Retreat to Advance Maternal and Child Health Scholarship and Practice*. You are in for a real treat! This program is hosted by the Maternal and Child Health Program (MCHP) at the University of Illinois at Chicago (UIC) School of Public Health and sponsored in part by the UIC MCHP; grant number T21MC08048 from the Maternal and Child Health Bureau, US Department of Health and Human Services, Health Resources and Services Administration; and Near North Health Service Corporation, Chicago, IL.

During this Retreat, you will have many opportunities to develop your MCH Leadership Competencies (<http://leadership.mchtraining.net/>) including opportunities to engage with your MCH colleagues, develop leadership skills, and enhance your MCH knowledge base and skill set.

The program includes a dynamic keynote address about Life Course Science and will encourage you to think about what it means for our work in MCH. We will highlight real-life examples about how MCH programs are incorporating Life Course into their teaching, research, and practice. We are also pleased to have a session on advocating for MCH in the current economic climate with AMCHP's Executive Director, Mike Fraser. Additionally, we will introduce you to the concept of Community of Practice (CoP), build our own MCH Leadership and Legacy CoP, teach you how to build *your own* CoP, and finally we will use the CoP to learn a process for breaking down silos so that we can work more collaboratively.

In addition to all of these opportunities, we hope that you will take the time during the retreat to relax, reflect, and rejuvenate! Sometimes, all you need is a bit of reflection time to be reminded about what is next in your work to improve MCH!

Once the retreat is over, be sure to stay in touch with us on our website at [www.uic.edu/sph/mch](http://www.uic.edu/sph/mch), on twitter @matchildhlthuic, on our blog at [www.mchatuic.wordpress.com](http://www.mchatuic.wordpress.com), and on Facebook at <http://www.facebook.com/mchatuic>.

Along with our National Retreat Planning Committee, welcome to this year's retreat!

Sincerely,

*Arden Handler*  
Arden Handler, DrPH  
Professor and Co-Director  
UIC MCHP

*Noel Chavez*  
Noel Chavez, PhD, RD  
Associate Professor and Co-Director  
UIC MCHP

*Kris Risley*  
Kris Risley, DrPH  
Continuing Education Director  
UIC MCHP

## *The mission of the Maternal and Child Health Program at the University of Illinois at Chicago*



Through collaborative research activities, field-based learning in courses and field practica, MCHP faculty and students work closely with state and local health agencies, welfare and education agencies, not-for-profit advocacy organizations, and community-based health and social service organizations to **improve the health and well-being of women, children, and families**, particularly in the Department of Health & Human Services (DHHS) Regions V and VII. The MCHP at UIC-SPH is one of thirteen MCH programs at schools of public health in the United States that are currently funded by the Maternal and Child Health Bureau (MCHB) of the Health Resources and Services Administration (HRSA).

The MCHP at UIC-SPH provides leadership education at the master's and doctoral level for individuals pursuing careers in maternal and child health. Also, the diverse MCHP faculty and staff are actively engaged in conducting research and providing continuing education and technical assistance to the MCH workforce with a focus on improving the health of women, children, and families, particularly in Regions V and VII.



## General Information

### Hotel



#### Business Services

Business Services are open 24 Hours a day. Available business services at the hotel include: internet access, printing, computer workstation, facsimile, and word processing.

#### Complimentary Hotel Shuttle

The Hyatt Lodge Complimentary Shuttle goes within a five mile radius of the hotel to include: local businesses, Oak Brook Shopping Center, and area restaurants. This 14 passenger van is based on availability. Please contact the Front Office for scheduling times.

#### Gift Shop and Off Site Shopping

Season's Gift Shop offers unique McDonald's memorabilia, snacks, magazines, toiletries, etc. Hours of Operation: Monday-Friday 7:00am-7:00pm, Saturday-Sunday 9:00am-3:00pm

Oak Brook Shopping Center is approximately 1.5 miles from The Hyatt Lodge and features premier department stores, 160 specialty shops, and 20 restaurants. Visit [www.oakbrookcenter.com](http://www.oakbrookcenter.com) for more information.

#### Healthscape Fitness Center

The Hyatt Lodge partners with Healthscape Fitness Center to provide you with an opportunity to stay fit while staying at the hotel. Sign up for one of the many classes, such as aqua aerobics, kickboxing, and ZUMBA. From the sauna and steam room to the three whirlpools and 70-foot indoor pool, the expansive health center complex offers something for everyone. Become a Hyatt Gold Passport member (<http://goldpassport.hyatt.com>) to use gym facilities at no charge. Pool and whirlpool are complimentary.



#### Healthscape Spa

The luxury spa and hotel provides you ample opportunity to restore inner balance and re-invigorate your body in a resplendent 88-acre natural setting. Spa services include: manicure and pedicure stations. The two relaxing massage therapy rooms feature Swedish massages, Aromatherapy, stone massages, facials and skin treatments. The Healthscape Spa is located on the "C" Level of the Hotel next to the Health Club. For Reservations, please call 630.581.6709 or e-mail the spa at [Healthscape.Spa@tcaclubs.com](mailto:Healthscape.Spa@tcaclubs.com).

#### Outdoor Recreational Activities

Enjoy the following outdoor activities available on the 88-acre forest preserve and private, secluded lake: Four miles of jogging and walking trails, Paddleboats (seasonal) for use on the scenic lake, Mountain bikes (seasonal), Team adventure course (corporate activity), Sand volleyball court (seasonal), Family scavenger hunts, Oak Brook Golf Club, PGA instruction, Golf tournaments, Pro Shop, Roaming beverage cart, Dining and lounge on 9th green, and Grass tee driving range and practice amenities.

## *Continuing Education Units: Contact Hours & Commercial Support*

Continuing education units (CEU's) are available for nurses, dietitians, social workers, and certified health education specialists. CEU requirements vary by the professional group providing the approval. ***If you wish to obtain continuing education credit, please sign up at the retreat registration desk.***

***Commercial Support:*** This educational activity is being presented without the provision of commercial support and without bias or conflict of interest from the planners and presenters.

***UIC College of Nursing:*** The UIC College of Nursing is an approved provider of continuing nursing education by the Illinois Nurses Association, an accredited approver by the American Nurses Credentialing Center's Commission on Accreditation. Nurse professionals may receive up to 15 1/2 contact hours of continuing education. Please pick up a Nursing Continuing Education Form at the registration desk. NOTE: Nurses must complete a separate evaluation form to receive CNEs for this event (please check at registration desk).

***Registered Dietitians:*** Registered Dietitians may receive up to 15 3/4 hours of continuing professional education.

***Social Workers:*** Social Workers may obtain up to 15 3/4 CEU's for attending the retreat. Participants must submit their license number and sign in and out each day at the registration desk. The UIC Department of Disability and Human Development is an approved sponsor for social work CEU's within the College of Applied Health Sciences at the University of Illinois at Chicago.

***Certified Health Educators:*** Certified Health Education Specialists may receive up to 15 3/4 CECH.

## *Retreat Evaluation*

We value your feedback and use it to guide the development of our professional development programs. Please take the time to complete the Retreat evaluation form and return it to the registration table.

## *Professional Coaching*

Professional Coaching is available to individuals who are interested in exploring their career path, creating more work/life balance, taking their work and leadership to the next level, or who want to explore particular work/life challenges.

Our coaches are trained and certified through the Coaches Training Institute ([www.thecoaches.com](http://www.thecoaches.com)). If you are new to coaching or have questions please check out the following link: <http://coachfederation.org/intcoachingweek/about-coaching/>.

Participants signed up for a coaching session when they registered for the Retreat. These individuals were assigned coaching slots prior to the start of the Retreat.

If you have a time slot assigned to you, we suggest the following so that you can get the most from your coaching experience: 1.) Be on time for the appointment. The sessions are booked back to back, so if you are late for your session it will still end on time. 2.) The more prepared you are for your coaching session, the more you will get from the experience. So please bring a topic or focus for the coaching session. It can be as broad or specific as you like. To help you focus, consider:

- What would I like to be different by the end of the coaching session?
- What do I want from this coaching session?

NOTE: You may choose to complete the personal or professional assessments that are included in your registration materials. Either one of these tools may help you to identify a particular topic for your coaching session. You decide how you want to invest your coaching time.

# Program at-a-Glance

## Monday, July 25, 2011

11:00am-6:00pm	<b>Registration</b>	<i>Hyatt Lodge Grand Oaks Foyer</i>
1:00pm-2:30pm	<b>Welcome &amp; Legacy Session</b> <i>Critical Reflections on Life Course Science &amp; Integrating Life Course Into MCH</i> Amy Fine, MPH & Arden Handler, DrPH	<i>Hyatt Lodge Grand Oaks Pavilion</i>
2:45pm-4:15pm	<b>Community Building</b> <i>Creating Positive Connections: Getting to Know Our MCH Colleagues</i> Alice Richman, PhD, MPH & Jaime Klaus, MA	<i>Hamburger University Rooms 134-136</i>
4:30pm-5:30pm	<b>Community of Practice (CoP)</b> <i>CoP: What Is It, Why It Matters, How We Cultivate It?</i> Cathy Jacob, BA, CPCC & Juhree Zimmerman, RN, BScN, Med, CPCC, ORSCC	<i>Hyatt Lodge Grand Oaks Pavilion</i>
8:00pm-9:30pm	<b>Dessert Reception</b>	<i>Hyatt Lodge Upper Deck Terrace</i>

## Tuesday, July 26, 2011

8:00am-5:00pm	<b>Registration</b>	<i>Hyatt Lodge Grand Oaks Foyer</i>
7:00am-8:00am	<b>Continental Breakfast</b>	<i>Hyatt Lodge Grand Oaks Pavilion</i>
8:00am-9:30am	<b>MCH Legacy</b> <i>Life Course: Current Happenings in Practice</i> Lori Anderson, PhD, Karen Trierweiler, MS, CNM & Carol Brady, MA  Moderator: Christine Bozlak, PhD, MPH	<i>Hyatt Lodge Grand Oaks Pavilion</i>
10:00am-12:00pm	<b>Community of Practice (CoP)</b> <i>Initiation of the Inaugural MCH Leadership &amp; Legacy (LL) CoP</i> Cathy Jacob, BA, CPCC & Juhree Zimmerman, RN, BScN, Med, CPCC, ORSCC	<i>Hyatt Lodge Grand Oaks Pavilion</i>
12:00pm-1:45pm	<b>Lunch/Rest/Reflection/Journaling</b>	<i>Hyatt Lodge Grand Oaks Pavilion</i>
1:45pm-3:45pm	<b>Community of Practice (CoP)</b> <i>Building the Foundation for the MCH LL CoP</i> Cathy Jacob, BA, CPCC & Juhree Zimmerman, RN, BScN, Med, CPCC, ORSCC	<i>Hyatt Lodge Grand Oaks Pavilion</i>
4:00pm-5:00pm	<b>Leadership Development</b> <i>Creating the Learning Agenda for the MCH LL CoP</i> Cathy Jacob, BA, CPCC & Juhree Zimmerman, RN, BScN, Med, CPCC, ORSCC	<i>Hyatt Lodge Grand Oaks Pavilion</i>

## Wednesday, July 27, 2011

8:00am-12:00pm	<b>Registration</b>	<i>Hyatt Lodge Grand Oaks Foyer</i>
7:00am-8:00am	<b>Continental Breakfast</b>	<i>Hyatt Lodge Grand Oaks Pavilion</i>
8:00am-9:30am	<b>MCH Advocacy/Legacy</b> <i>Advocating for MCH in Challenging Times</i> Mike Fraser, PhD	
9:45am-12:00pm	<b>Leadership Development</b> <i>Breaking Down Silos &amp; Building Communication &amp; Collaboration Among Diverse Systems</i> Cathy Jacob, BA, CPCC & Juhree Zimmerman, RN, BScN, Med, CPCC, ORSCC	<i>Hyatt Lodge Grand Oaks Pavilion</i>
12:00pm-2:00pm	<b>Lunch/CoP</b> <i>Sustaining the LL CoP and Final Retreat Closing</i> Cathy Jacob, BA, CPCC, Juhree Zimmerman, RN, BScN, Med, CPCC, ORSCC & Arden Handler, DrPH	<i>Hyatt Lodge Grand Oaks Pavilion</i>

# Retreat Program

**Monday, July 25, 2011**

**11:00am-6:00pm**

**Registration**

*Hyatt Lodge Grand Oaks Foyer*



*CoP: A group of people who share a concern or a passion for something they do & learn how to do it better as they interact regularly  
~ Etienne Wenger*

**1:00pm-2:30pm**

**Welcome and Legacy Session**

*Hyatt Lodge Grand Oaks Pavilion*



*Welcome:* **Arden Handler**, DrPH, Co-Director and Professor, Maternal and Child Health Program, University of Illinois at Chicago

*Critical Reflections on Life Course Science & Integrating Life Course Into MCH*

**Amy Fine**, MPH, Health Policy/Program Consultant, Washington, DC and **Arden Handler**, DrPH, Co-Director and Professor, Maternal and Child Health Program, University of Illinois at Chicago



Dr. Arden Handler and Ms. Amy Fine will provide an overview of life course science, discuss key principles of life course theory, articulate how a life course perspective relates to the history of Maternal and Child Health as a field, and demonstrate how and where life course science is currently being applied. Four types of challenges raised by life course science will be addressed: conceptual, data, operational, and strategic/political. The two session leaders will lead participants in a conversation about what has been done to date to address these challenges and what remains to be accomplished as we move forward. Participants will have a direct opportunity to discuss and propose strategies for overcoming the challenges to the life course approach within the larger context of the future of Maternal and Child Health as a field.

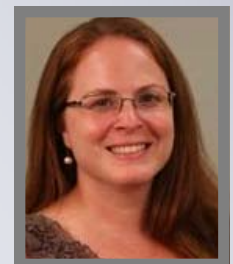
**2:45pm-4:15pm**

**Community Building**

*Hamburger University Rooms 134-136*

*Creating Positive Connections: Getting to Know Our MCH Colleagues*

**Jaime Klaus**, MA, Project Coordinator, Maternal and Child Health Program, Division of Community Health Sciences, School of Public Health, University of Illinois at Chicago and **Alice Richman**, PhD, MPH, Assistant Professor, Department of Health Education and Promotion, ECU College of Health and Human Performance, Greenville, NC



This session lays the foundation for the Community of Practice sessions to follow. Join us for this structured yet fun opportunity to meet many of the program participants and speakers! You won't want to miss this session as it will make the other sessions that much easier and more meaningful.

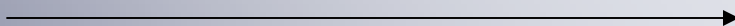


**4:30pm-5:30pm**

**Community of Practice (CoP)**

*Hyatt Lodge Grand Oaks Pavilion*

*Workshop details on the next page*



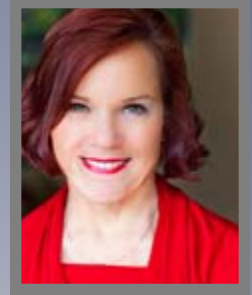
## Monday, July 25, 2011

*Community of Practice (CoP): What Is It, Why It Matters, How We Cultivate It?*



**Cathy Jacob**, BA, Partner, Fire Inside Leadership, Bedford, NS, Canada and **Juhree Zimmerman**, RN, BScN, Med, CPCC, ORSCC, Master Certified Coach, Strategy for Synergy, Vancouver, British Columbia, Canada

In this session, Leadership Development experts will bring to life Eteinne Wenger's work on Communities of Practice. They will highlight the value and importance of working in a Community of Practice and lay the foundation for the development of the inaugural MCH Leadership and Legacy Community of Practice.

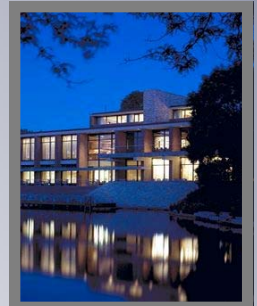


**8:00pm-9:30pm**

**Dessert Reception**

*Hyatt Lodge Upper Deck Terrace*

Join us for a relaxing evening on the upper deck terrace at the Hyatt Lodge. The grounds at the Hyatt are peaceful and beautiful! Have dessert and rejuvenate after a thought-provoking and engaging afternoon. Reconnect with participants you met in the networking workshop, and get to know the MCH colleagues you have not met yet. You may even meet a few of our UIC MCH alumni as this is a joint UIC MCH Alumni and Retreat reception.



## Tuesday, July 26, 2011



**8:00am-5:00pm**

**Registration**

*Hyatt Lodge Grand Oaks Pavilion*

**7:00am-8:00am**

**Continental Breakfast**

*Hyatt Lodge Grand Oaks Foyer and Pavilion*

**8:00am-9:30am**

**MCH Legacy**

*Hyatt Lodge Grand Oaks Pavilion*

*Life Course: Current Happenings in Practice*

**Lori S. Anderson**, PhD, RN, CPNP, Assistant Professor, University of Wisconsin, Madison School of Nursing, **Karen Trierweiler**, MS, CNM, Director, Center for Health Families and Communities, Colorado Department of Public Health and Environment, Denver, CO, and **Carol Brady**, MA, Executive Director, Northeast Florida Healthy Start Coalition, Inc., Jacksonville, FL

Moderator: **Christine Bozlak**, PhD, MPH, Adjunct Lecturer and Advocacy Program Manager, Consortium to Lower Obesity in Chicago Children



*Lori Anderson*



*Carol Brady*

*Workshop description on the next page* →

## Tuesday, July 26, 2011



*Karen Trierweiler*

In this highly practical session, three practice and research pioneers will discuss their level of engagement with life course science and will provide examples of the work they are doing to engage in life course activities. They will discuss their process over time, challenges (including funding challenges), opportunities, early findings and thoughts for the future. They will provide advice for others who are exploring life course opportunities in their states and engage with participants to explore life course possibilities.



*Christine Bozlak*

**10:00am-5:00pm**

**Community of Practice (CoP)**

***Hyatt Lodge Grand Oaks Pavilion***

**Cathy Jacob**, BA, Partner, Fire Inside Leadership, Bedford, NS, Canada and **Juhree Zimmerman**, RN, BScN, Med, CPCC, ORSCC, Master Certified Coach, Strategy for Synergy, Vancouver, British Columbia, Canada

*Initiation of the Inaugural MCH Leadership and Legacy (LL) CoP*

10:00am-12:00pm

*Lunch/Rest/Reflection/Journaling*

12:00pm-1:45pm

*Building the Foundation for the MCH LL CoP*

1:45pm-3:45pm

*Creating the Learning Agenda for the LL CoP*

4:00pm-5:00pm

In today's CoP sessions (10am-5pm), Cathy and Juhree will facilitate the launching of the MCH Leadership and Legacy Community of Practice. They will engage participants in the developmental stages of a CoP and begin discussions about how to grow and sustain the CoP. Participants will also learn how to develop their own CoP.



*"I hear and I forget.  
I see and I remember.  
I do and I understand."  
~Confucius*

## Wednesday, July 27, 2011



**8:00am-12:00pm**

**Registration**

***Hyatt Lodge Grand Oaks Foyer***

**7:00am-8:30am**

**Continental Breakfast**

***Hyatt Lodge Grand Oaks Foyer and Pavilion***

*The goal of community design is to bring out the community's own internal direction, character, and energy.  
~Cultivating Communities of Practice*

**Wednesday, July 27, 2011**



**8:30am-9:30am**

**MCH Advocacy/Legacy**

*Hyatt Lodge Grand Oaks Pavilion*

*Advocating for MCH in Challenging Times*

**Mike Fraser**, PhD, Executive Director, Association of Maternal and Child Health Programs

In this plenary session, Dr. Fraser will lead a discussion about how to advocate for the needs of women, children, and families given the current economic climate. He will provide an overview of current MCH happenings at the national level and discuss state and local level implications. Participants will leave the session with a clearer appreciation for how to better advocate for MCH.

**9:45am-12:00pm**

**Leadership Development**

*Hyatt Lodge Grand Oaks Pavilion*

*Breaking Down Silos and Building Communication and Collaboration Among Diverse MCH Systems (continued)*

**Cathy Jacob**, BA, Partner, Fire Inside Leadership, Bedford, NS, Canada and **Juhree Zimmerman**, RN, BScN, Med, CPCC, ORSCC, Master Certified Coach, Strategy for Synergy, Vancouver, British Columbia, Canada

In this intensive skills-building workshop, participants will engage in a process to break down silos, explore the different perspectives of various existing silos, and what might be possible when silos do not exist. This workshop is based in Relationship Systems Intelligence and uses systems-level tools to bust silos, address poor and toxic communication patterns, ineffective communication, lack of productivity and low positivity, poor conflict resolution, low creativity and team synergy, and role confusion or poorly defined/occupied roles. Participants will conclude this workshop feeling that silos have been busted and they will have a clear structure for engaging in their own silo breaking work.

**12:00pm-2:00pm**

**Lunch/Community of Practice (CoP)**

*Hyatt Lodge Grand Oaks Pavilion*

*Sustaining the LL CoP and Final Retreat Closing*

**Cathy Jacob**, BA, Partner, Fire Inside Leadership, Bedford, NS, Canada, **Juhree Zimmerman**, RN, BScN, Med, CPCC, ORSCC, Master Certified Coach, Strategy for Synergy, Vancouver, British Columbia, Canada, and **Arden Handler**, DrPH, Co-Director and Professor, Maternal and Child Health Program, University of Illinois at Chicago

Initiating and developing the agenda for a Community of Practice are two steps connected with establishing a strong, working Community of Practice. In this final Retreat session, the speakers will discuss how to grow and sustain the Community and help participants to take on specific roles and next steps in support of this community. By the end of the program, individuals will decide whether or not they want to participate in this Community and/or they will have the skills necessary to develop their own Community of Practice.

## *Self-Reflection/Notes*

Please use the next few pages of this booklet to take notes and reflect on how the experiences you have had at the retreat will help shape your personal and professional growth. You might want to consider: 1.) What are 1-2 things that you learned that you can incorporate into your work and/or personal life? 2.) Will the things you learned help you face the challenges you will encounter in the workplace? If so, how? 3.) How will you participate/support the MCH community of practice?





## *Notes*

---

---

---

---

---

---

---

---

---

---

## *Special Thanks*

A very special thank you to the MCHP faculty and staff, the National Retreat Planning Committee and the Retreat volunteers! It has been and continues to be an honor to work with such an amazing, competent, and passionate group of individuals who are so committed to improving the health and well-being of women, men, children, and families! Thank you for your ongoing and consistent support and guidance.

Also, a big thank you to all of you attending this Retreat. You are a diverse group of interdisciplinary and intergenerational researchers and practitioners who are passionate about and committed to your work in MCH. You are an inspiration to us and necessary to improving MCH! It is so fun to connect with all of you in person – to share our passion for improving the health and well-being of women, men, children, and families! We are excited that you feel as strongly about Leadership, Legacy, and Community as we do.

Sincerely,

*Kris Risley*

Kristina Y. Risley, DrPH  
Continuing Education Director

## *Sponsors*

**The University of Illinois at Chicago, School of Public Health, Community Health Sciences, Maternal and Child Health Program**

**Grant number T21MC08048, Maternal and Child Health Bureau, U.S. Department of Health and Human Services, Health Resources and Services Administration**

**The University of Illinois at Chicago, College of Nursing**

**Near North Health Service Corporation, Chicago, IL**

# MCHP Faculty and Staff

## Faculty

Noel Chavez, PhD, RD, LDN, Co-Director  
Arden Handler, DrPH, Co-Director  
Rachel Caskey, MD  
Michele Issel, PhD, RN  
Michele Kelley, MSW, MA, ScD  
Joan Kennelly, PhD, BSN  
Naomi Morris, MD, MPH  
Nadine Peacock, PhD  
Deborah Rosenberg, PhD

## Adjunct Faculty

Christine Bozlak, DrPH, MPH  
Julie Chor, MD, MPH  
Stacie Gellar, PhD  
Memoona Hasnain, MD, PhD, MPH  
Kristin Rankin, PhD  
Myrtis Sullivan, MD, MPH, FAAP  
Karen Vanlandegham, MPH

## Staff

Jaime Klaus, MA  
Kristina Y. Risley, DrPH  
Bekeela Watson, MPH

# National Retreat Planning Committee

**HEATHER BARRETT**, Tulane School of Public Health and Tropical Medicine, MCHPH Leadership Training Program

**CRAIG BECKER**, University of Wisconsin Children's Hospital and Clinics, Pediatric Pulmonary and Cystic Fibrosis Center

**ELLEN K. BOWSER**, University of Florida, Pediatric Pulmonary Center, Gainesville, FL

**ALETHIA CARR**, Bureau of Family, Maternal & Child Health, Lansing, MI

**SARENA DACUS**, CityMatCH at the University of Nebraska Medical Center, Department of Pediatrics/Section on Child Health Policy

**MIKE FRASER**, Association of Maternal and Child Health Programs

**HOLLY GRASON**, Johns Hopkins School of Public Health

**ARDEN HANDLER**, Maternal and Child Health Program, School of Public Health, Community Health Sciences, UIC

**MICHELE ISSEL**, Maternal and Child Health Program, School of Public Health, Community Health Sciences, UIC

**LAURA KAVANAGH**, Maternal and Child Health Bureau (*Ex-Officio Member*)

**RUSSELL KIRBY**, Marrell Endowed Chair, College of Public Health, Community and Family Health, University of South Florida.

**JULIA JOHNSEN**, Center for Leadership Education in Maternal and Child Public Health, Division of Epidemiology and Community Health, University of Minnesota, School of Public Health

**CHERI PIES**, Family, Maternal, and Child Health Programs, Martinez, CA

**MADIHA QURESHI**, March of Dimes, Chicago, IL

**SHOKUFEH RAMIREZ**, Tulane School of Public Health and Tropical Medicine, MCHPH Leadership Training Program

**ALICE RICHMAN**, Florida Covering Kids & Families, The Lawton and Rhea Chiles Center for Healthy Mothers and Babies, University of Florida

**ITALIA ROLLE**, Division of Epidemiology & Surveillance Capacity Development, Coordinating Office for Global Health, Centers for Disease Control and Prevention

**MARJORY RUDERMAN**, MHS, Johns Hopkins Women's and Children's Policy Center

**JAMIE STANG**, University of Minnesota, School of Public Health

**DOUG TAREN**, Mel and Enid Zuckerman College of Public Health, Tucson, AZ

**JOSEPH TELFAIR**, School of Health and Human Performance, University of North Carolina at Greensboro

**KAREN VANLANDEGHEM**, MCH Consultant, Chicago, IL

**MARTHA WINGATE SLAY**, School of Public Health, University of Alabama at Birmingham

